

IBM Sterling Gentran:Server for Windows



# Communications User Guide

*Version 5.3.1*



IBM Sterling Gentran:Server for Windows



# Communications User Guide

*Version 5.3.1*

**Note**

Before using this information and the product it supports, read the information in "Notices" on page 67.

This edition applies to the 5.3.1 version of IBM Sterling Gentrans:Server for Microsoft Windows and to all subsequent releases and modifications until otherwise indicated in new editions.

© **Copyright IBM Corporation 1996, 2012.**

US Government Users Restricted Rights – Use, duplication or disclosure restricted by GSA ADP Schedule Contract with IBM Corp.

---

# Contents

## Chapter 1. Communications Overview . . . . . 1

Mailbox Server System . . . . .	1
Content Types and Subtypes . . . . .	1
Gateways . . . . .	2
Messages . . . . .	2
Message Flow . . . . .	3

## Chapter 2. Configure Communications . . . . . 5

About the Mailbox Server Manager. . . . .	5
Register Server Dialog Box. . . . .	7
File System Gateway Dialog Box. . . . .	7
File System Gateway Properties for File System	
Mailbox - Collection Tab . . . . .	7
File System Gateway Properties for File System	
Mailbox - Extraction Tab . . . . .	9
Edit Recipients Dialog Box . . . . .	11
E-mail Addresses Dialog Box . . . . .	11
Server Properties Dialog Box . . . . .	12
Server Properties Dialog Box - Database Tab . . . . .	12
Server Properties Dialog Box - Security Tab. . . . .	13
Server Properties Dialog Box - Messages Tab . . . . .	14
Server Properties Dialog Box - Files Tab . . . . .	16
Server Properties Dialog Box - Startup Tab . . . . .	16
System Security Dialog Box . . . . .	19
Mailbox Properties . . . . .	19
Mailbox Properties Dialog Box - Addressing Tab . . . . .	19
Mailbox Properties Dialog Box - Gateway Tab . . . . .	19
Mailbox Properties Dialog Box - Delivery Rules	
Tab . . . . .	20
Mailbox Properties Dialog Box - Security Tab . . . . .	21
Add Users and Groups Dialog Box . . . . .	22
Import/Export Dialog Boxes. . . . .	23
Dependencies Dialog Box. . . . .	23
Configuring Dependencies between Services . . . . .	24
Starting the Mailbox Service. . . . .	24
Stopping the Mailbox Service . . . . .	25
Configuration Process . . . . .	25
Configuring the File System Gateway . . . . .	26
Creating Mailboxes . . . . .	26
Create Mailbox Wizard Screen 1 . . . . .	26
Create Mailbox Wizard Screen 2 . . . . .	26
Create Mailbox Wizard Screen 3 . . . . .	27
Create Mailbox Wizard Screen 4 . . . . .	27
Creating File System Mailboxes. . . . .	27
Modifying Mailbox Properties . . . . .	29
Exporting a Mailbox . . . . .	29
Importing a Mailbox . . . . .	30

## Chapter 3. Lists . . . . . 31

Distribution List Wizard Screen 1 . . . . .	31
Distribution List Wizard Screen 2 . . . . .	31
Add Recipients Dialog Box . . . . .	31
Edit Recipients Dialog Box (for HTTP and SMTP	
gateways) . . . . .	31
Edit MIME Headers Dialog Box . . . . .	31
Creating a Distribution List . . . . .	32
Deleting Distribution Lists . . . . .	32
Creating Recipient Lists . . . . .	33

## Chapter 4. Delivery Rules. . . . . 35

About Delivery Rules . . . . .	35
Delivery Agents . . . . .	36
EXE Delivery Agent . . . . .	37
VATPRINT Utility . . . . .	38
XPROCESS Utility . . . . .	39
Xprocess DLL Agent . . . . .	43
Delivery Rules Properties. . . . .	46
New/Edit Delivery Rule dialog box . . . . .	47
Associating a Delivery Rule with a Mailbox . . . . .	47
Setting the Processing Order. . . . .	49
Editing a Delivery Rule . . . . .	49
Deleting a Delivery Rule . . . . .	50

## Chapter 5. Messages. . . . . 51

Message Filtering . . . . .	51
System Browser Filter Dialog Box . . . . .	51
System Browser Dialog Box . . . . .	52
Filter Dialog Box . . . . .	53
Filter Browser . . . . .	55
Mailbox Properties Dialog Box . . . . .	56
Viewing Messages . . . . .	56
View Attachment Dialog Box . . . . .	57
Viewing Message Attachments . . . . .	57
Setting Filter Properties for All Mailboxes . . . . .	57
Setting Filter Properties for a Specific Mailbox. . . . .	58
Deleting a Mailbox Message. . . . .	58
Restoring Deleted Messages . . . . .	58

## Chapter 6. Mailbox Server Error Messages . . . . . 61

About Error Messages. . . . .	61
Error Message Handling . . . . .	61
Error Message Details . . . . .	62

## Notices . . . . . 67

## Index . . . . . 71



---

# Chapter 1. Communications Overview

---

## Mailbox Server System

The Mailbox Server system is the communications system used to transfer messages between you and your trading partners. This system allows you to transfer messages using a variety of communications protocols.

The Mailbox Server system has the following components:

- mailboxes
- distribution lists
- delivery agents
- gateways

The Mailbox Server features two types of mailboxes:

- Non-gateway mailboxes

When you installed IBM® Sterling Gentran:Server® for Microsoft Windows, a default, non-gateway mailbox was created called the Sterling Gentran:Server Application mailbox. This mailbox is used by the Mailbox Server to hold messages that are being transferred between your Sterling Gentran:Server and your trading partners.

- Gateway mailboxes

You are responsible for creating gateway mailboxes. When you create gateway mailboxes, you associate the mailbox with a gateway. The properties you define for each gateway mailbox determines how messages are transferred to your trading partners.

---

## Content Types and Subtypes

The content type and subtype values are used to indicate the Internet media type of the information being transmitted. The content type determines the mechanism to use to display the data.

You determine which action the system performs on each type of data by the values selected on the Mailbox tab of the System Configuration dialog box. To see what processes are invoked, see the Mailbox tab of the System Configuration dialog box.

Sterling Gentran:Server accepts, by default, the following content type/subtype combinations:

- Application/EDI
- Application/Import
- Application/Document-EDI

For example, Application/EDI is an application program type with a subtype of EDI (representing Electronic Data Interchange data). When Sterling Gentran:Server receives a message with an Application/EDI content type and subtype, it runs the GDW\_Process\_MBFFile command on the message, triggering the inbound process steps.

**Note:** Messages containing undefined content types remain in the Gentran Application mailbox.

---

## Gateways

Gateways are software components that control the transmission of messages between two parties.

You are responsible for defining the properties of the gateways that you use for transferring messages.

The File System Gateway is created when you install Sterling Gentran:Server. This gateway moves messages to a specified folder on your file system, thereby allowing you to use another communications system to transfer your messages. You can also use the File System gateway to test Sterling Gentran:Server to ensure that it is processing messages correctly.

In addition to the File System Gateway, Sterling Gentran:Server features a variety of optional gateways. Gateways are installed from the Sterling Gentran:Server installation (using the Options Pack selection) and are supplemented with separate gateway configuration guides.

---

## Messages

A message is a general term for a piece of information, such as an e-mail message, voice mail, or a simple text message. Messages that are transferred within Mailbox Server are specific types of messages that typically contain the data contained in your business documents.

Each message has the following properties:

- Message ID—uniquely identifies each message.
- Src ID - Lists the message ID assigned in the mailbox that sent the message.
- Subject—provides an introduction into the content of the message.
- Content type and subtype—describes the type of information contained in the message or attachment.
- From—describes the author.
- Recipient—describes the recipient.
- Status—shows how far the message and attachment have progressed through Mailbox Server.
- Message body—contains the main content of the message, typically displayed in a plain text format.
- Attachment—contains additional text or binary data elements (such as the data in your business documents).

Messages in the Mailbox Server are stored in the mailbox. These messages contain the addressing information (the message ID, recipient, sender, subject, and content type). Each message is assigned a unique identification number. In addition, messages contain a pointer to the location of the attachment.

### Attachments

An Attachment, from Mailbox Server's perspective, is the business document that you exchange with your Trading Partners. This document may contain the

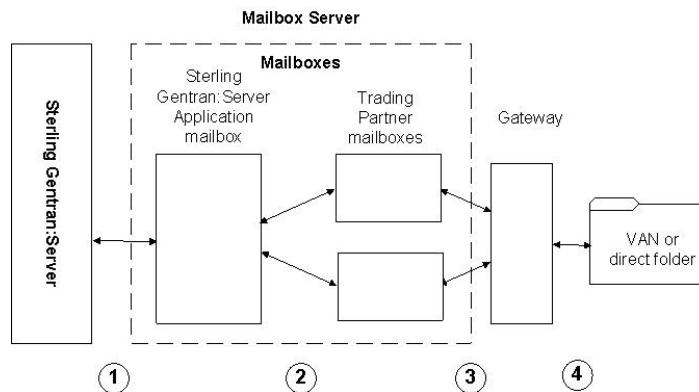


Electronic Data Interchange (EDI) information that is generated from your business systems. Mailbox Server stores this information as an attachment to the message.

The default directory where attachments are stored is gensrvnt\store. Each attachment is assigned a unique identification number.

## Message Flow

The following diagram shows a high-level overview of the flow of messages through Mailbox Server.



This table describes the flow of messages through the Mailbox Server. The stages listed on this table correspond to the numbers represented in the above illustration.

Stage	Description
1	All messages going to and from Sterling Gentran:Server are stored in the Sterling Gentran:Server Application mailbox.
2	Messages are transferred between the Sterling Gentran:Server Application mailbox and the Trading Partner mailboxes that you have created on Mailbox Server.
3	The properties you define for each Trading Partner mailbox determines how your messages are transferred to your Trading Partners.
4	The gateways control the actual communications with your VAN, your Trading Partner's computers, or the folders on your file system.

## Outbound Message Flow

This table describes the flow of documents from Sterling Gentran:Server to a Trading Partner.

Stage	Description
1	Business documents are processed on Sterling Gentran:Server. The documents are placed in the Out Documents folder and grouped into interchanges. The interchanges are attached to mail messages that are created in the Out Box of the Sterling Gentran:Server Application mailbox.
2	Sterling Gentran:Server delivers the message to your Trading Partner's In Box.
3	The communication subsystem transfers the message through the gateway that is associated with your Trading Partner's mailbox to the VAN or Trading Partner, or to a designated folder.

Stage	Description
4	The Mailbox Server marks the message in your Trading Partner's mailbox as sent.
5	Sterling Gentran:Server is notified of success or failure of the transmission.

## Inbound Message Flow

This table describes the inbound flow of documents through Sterling Gentran:Server and the Communications subsystem.

Stage	Description
	Your Trading Partner makes a message available for receipt.
	<p>If your Trading Partner is communicating to you through a VAN or through a direct connection, then the communications subsystem establishes a connection to the remote system, retrieves the message, and deposits it into the Trading Partner's Out Box on Sterling Gentran:Server.</p> <p>If your Trading Partner is communicating to you through a third party communications software, then the communications subsystem collects the files from a designated folder and deposits in the Trading Partner's Out Box.</p>
	Sterling Gentran:Server routes the file from the Trading Partner's Out Box to the Sterling Gentran:Server Application In Box.
	Sterling Gentran:Server retrieves the document from the In Box of the Sterling Gentran:Server Application mailbox and deposits it into the In Documents folder.

---

## Chapter 2. Configure Communications

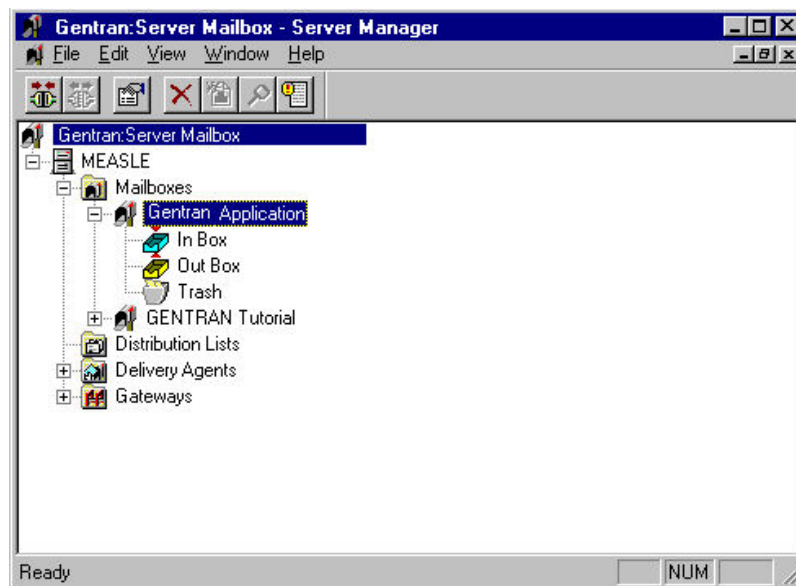
---

### About the Mailbox Server Manager

The Mailbox Server Manager allows you to add and remove mailbox components such as mailbox servers, mailboxes, and gateways.

Your day-to-day activities in administering and maintaining the Mailbox Server are accomplished using the Mailbox Server Manager.

The following shows the Mailbox Server Manager.



The following table describes the parts of the Mailbox Server Manager.

Table 1. Mailbox Server Manager screen parts and functions



















Part	Function
	Identifies a Mailbox Server. The Mailbox Server is a container that holds mailboxes, distribution lists, delivery agents, and gateways.
	Identifies the Mailbox folder for the server. The Mailbox folder contains all of the mailboxes you have defined for use with Sterling Gentran:Server.
	Identifies a Mailbox. Each mailbox has three elements: an In Box, an Out Box, and a Trash container. These elements are created automatically when you create a new mailbox.
	Identifies an In Box.
	Identifies an Out Box.
	Identifies a Trash container.
	Identifies the Distribution list folder for the server.

Table 1. Mailbox Server Manager screen parts and functions (continued)

Part	Function
	Identifies the Delivery agent folder for the server.
	Identifies available delivery agents.
	Identifies the gateway folder for the server. A gateway folder contains communications gateways.
	Identifies a gateway. You use gateways to send and receive messages.

## Mailbox toolbar

This table lists the icons found on the Mailbox toolbar and descriptions of each icon.

Icon	Description
	Registers a Mailbox Server.
	Unregisters a Mailbox Server
	Edits the properties of the selected item.
	Deletes the selected item.
	Creates an item.
	Launches the Filter tool.
	Launches the Sterling Gentran:Server Audit Log.

## About Creating Mailboxes Using Mailbox Server Manager

Mailbox Server's Create Mailbox Wizard enables you to create mailboxes for your gateways. Using the Create Mailbox Wizard, you configure the following properties:

- Trading partner's mailbox name
- Sterling Gentran:Server e-mail address for your mailbox
- Whether you want to use the mailbox as a gateway

---

## Register Server Dialog Box

The Register Server dialog box is used to define your communications server.

The following table describes the parts of the Register Server dialog box.

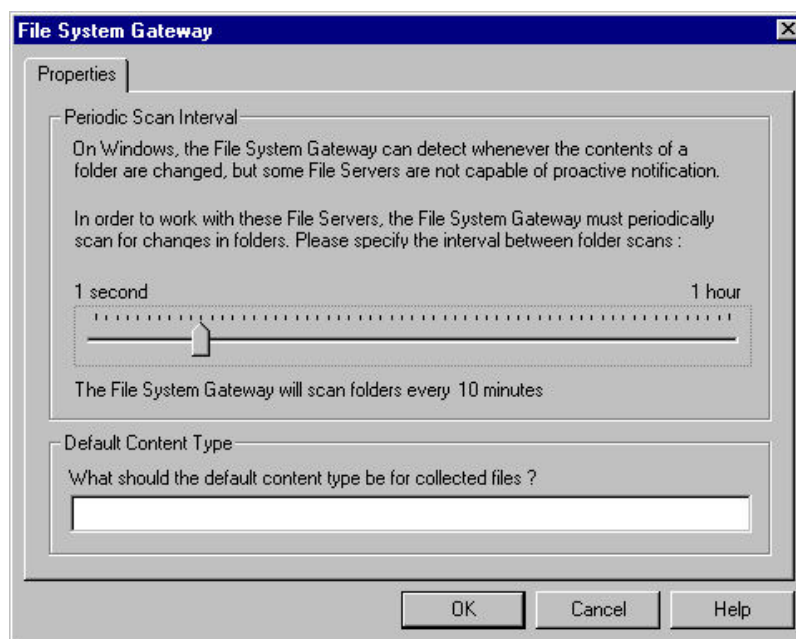
Part	Function
Register server	Enter the name of the Communications Server you are using. If the Communications Server is running on a cluster, enter the cluster name.

---

## File System Gateway Dialog Box

The File System Gateway dialog box is used to define the properties for storing or retrieving messages from a folder on your hard drive.

The following is an example of the File System Gateway Properties dialog box.



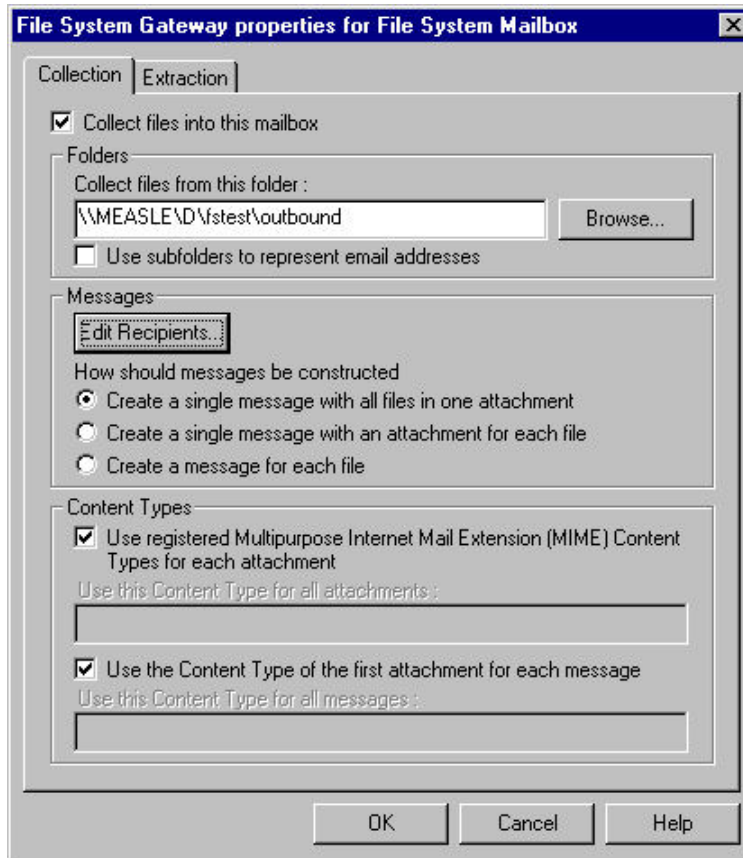
The following table describes the parts of the File System Gateway Properties dialog box.

Table 2. Properties tab parts and functions

Part	Function
Periodic Scan Interval	Defines the interval by which the File System Gateway scans folders (between 1 second and 1 hour).
Default Content Type	Defines the default MIME content type and subtype used for all files collected using this File System gateway.

## File System Gateway Properties for File System Mailbox - Collection Tab

The following shows the Collection tab of the File System Gateway Properties for File System Mailbox dialog box.



The following table describes the parts of the Collection tab.

Table 3. Collection tab parts and functions

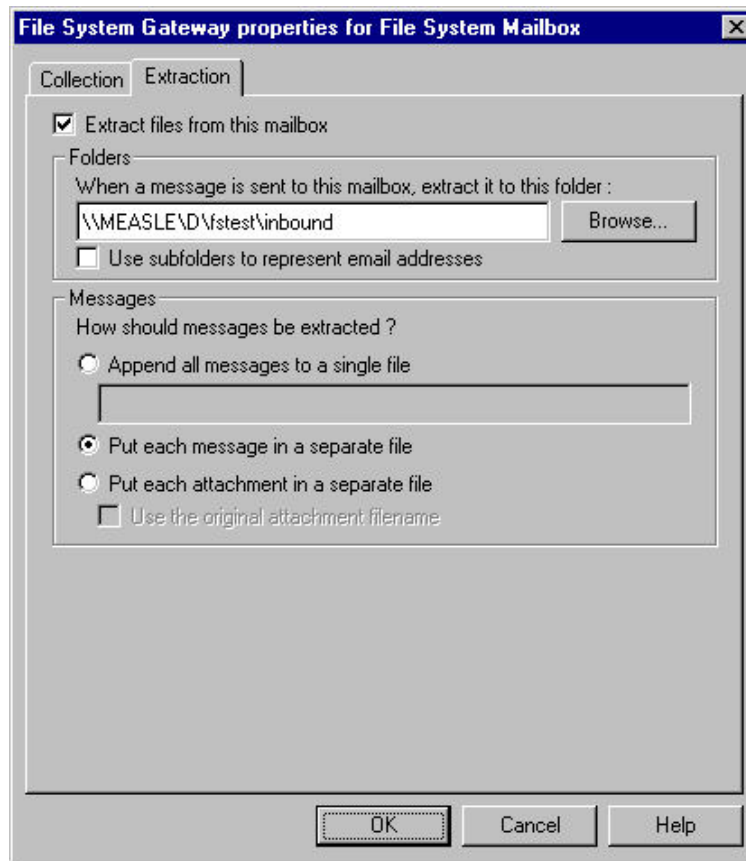
Part	Function
Collect files into this mailbox	Enables the gateway to collect files from the file system folder and direct them to this mailbox.
Collect files from this folder	Defines the folder from which the gateway pulls files.
Use subfolders to represent e-mail addresses	Causes the File System Gateway to write extracted files to a subfolder of the folder specified in the previous box. The subfolder has the mailbox's e-mail address.
Edit Recipients	Displays the Edit Recipients dialog box.
Create a single message with all files in one attachment	Puts all the files into one attachment and generates one message.
Create a single message with an attachment for each file	Makes each file a separate attachment, but generates one message.
Create a message for each file	Creates one message and one attachment for each file.
Use Registered Multipurpose Internet Mail Extension (MIME) Content Types for each attachment	Derives the content type for attachments from the registered MIME type for the file extension. If the file extension is not a registered MIME type, the system uses "Application" as the content type and the file extension as the content subtype.
Use this Content Type for all attachments	Uses the specified content type for every attachment.

Table 3. Collection tab parts and functions (continued)

Part	Function
Use the Content Type of the first attachment for each message	Uses the extension of the first file name collected into the current message.
Use this Content Type for all messages	Uses the specified content type for every message.

## File System Gateway Properties for File System Mailbox - Extraction Tab

The following shows the Extraction tab of the File System Gateway Properties for File System Mailbox dialog box.



The following table describes the parts of the Extraction tab.

Table 4. Extraction tab parts and functions

Part	Function
Extract files from this mailbox	Enables the File System Gateway to extract files from the File System Gateway mailbox.
When a message is sent to this mailbox, extract it to this folder	Defines the folder to which the File System Gateway adds messages sent to this mailbox.
Browse	Enables you to browse through drives, directories, and folders to locate the extraction folder.

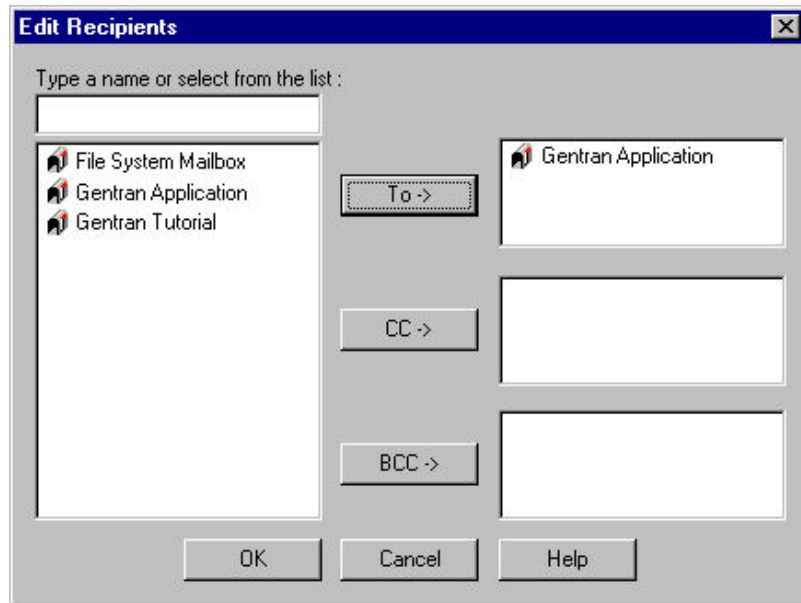
Table 4. Extraction tab parts and functions (continued)

Part	Function
Use subfolders to represent e-mail addresses	Causes the File System Gateway to write extracted files to a subfolder of the folder specified in the previous box. The subfolder has the same name as the mailbox.
Append all messages to a file	<p>Puts all attachments from all messages delivered to this mailbox in one file. Use any of the following special formatting characters in the filename or the extension:</p> <ul style="list-style-type: none"> <li>• %y – Two digit year. Examples: 07 = 2007, 08 = 2008</li> <li>• %Y – Four digit year. Examples: 2008, 2007</li> <li>• %m – Abbreviated month. Examples: Jan, Feb, Dec.</li> <li>• %M – Month as a decimal number. Examples: 01 = Jan, 12 = Dec.</li> <li>• %d – Abbreviated weekday. Examples: Mon, Tues.</li> <li>• %D – Day of the month as decimal number. Examples: 01, 10, 29.</li> <li>• %H – Hour in 24 hour format. Examples: 16 = 4 p.m., 6 = 6 a.m.</li> <li>• %N – Minutes. Examples: 10, 45, 55.</li> <li>• %S – Seconds. Examples: 10, 45, 55.</li> <li>• %K – Mailbox Message ID of extracted data. Examples: 12345, 10000.</li> <li>• %E – Audit Event ID. Examples: 10, 5000, 122222.</li> <li>• %U/%u – Unique number derived using the current time, process identifier, Message ID, and rand() function. Example: 0-32767 plus any number of trailing digits to make the filename unique.</li> </ul>
Put each message in a separate file	Puts all attachments to a message in one file, which is named for the message.
Put each attachment in a separate file	Puts each attachment in its own file.
Use the original attachment filename	<p>If each attachment is put in its own file, this option uses the original file name of the attachment for the file name.</p> <p>If this option is not selected, the system assigns a generic, incremental name to each attachment.</p> <p>For example: Att1, Att2, Att3</p>



## Edit Recipients Dialog Box

The following shows the Edit Recipients dialog box.



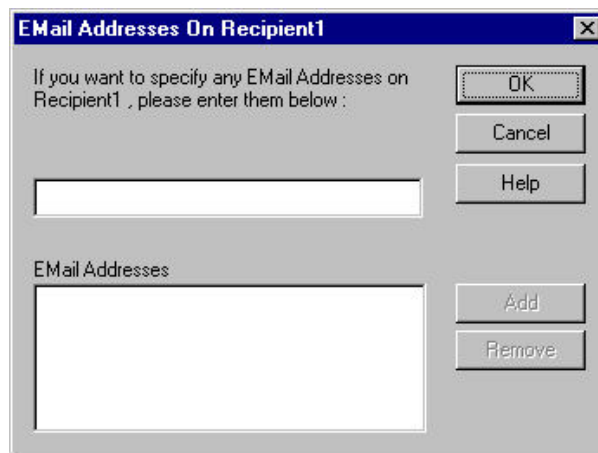
The following table describes the parts of the Edit Recipients dialog box.

Table 5. Edit Recipients dialog box parts and functions

Part	Function
Type a name or select from the list	Enables you to specify a message recipient.
To	Routes messages to the specified recipient.
CC	Routes a carbon copy of the message to the specified recipient.
BCC	Routes a blind carbon copy to the specified recipients.

## E-mail Addresses Dialog Box

The following shows the E-mail Addresses dialog box.



The following table describes the parts of the E-mail Addresses dialog box.

Table 6. EMail Addresses dialog box parts and functions

Part	Function
If you want to specify any EMail addresses, please enter them below	Specifies an e-mail address that you want to associate with a recipient.
Email Addresses list	This list contains all the mail addresses on the VAN or Trading Partner's computer who will receive messages.
Add	Adds the specified e-mail address to a recipient's system routing information.
Remove	Removes a specified e-mail address.

## Server Properties Dialog Box

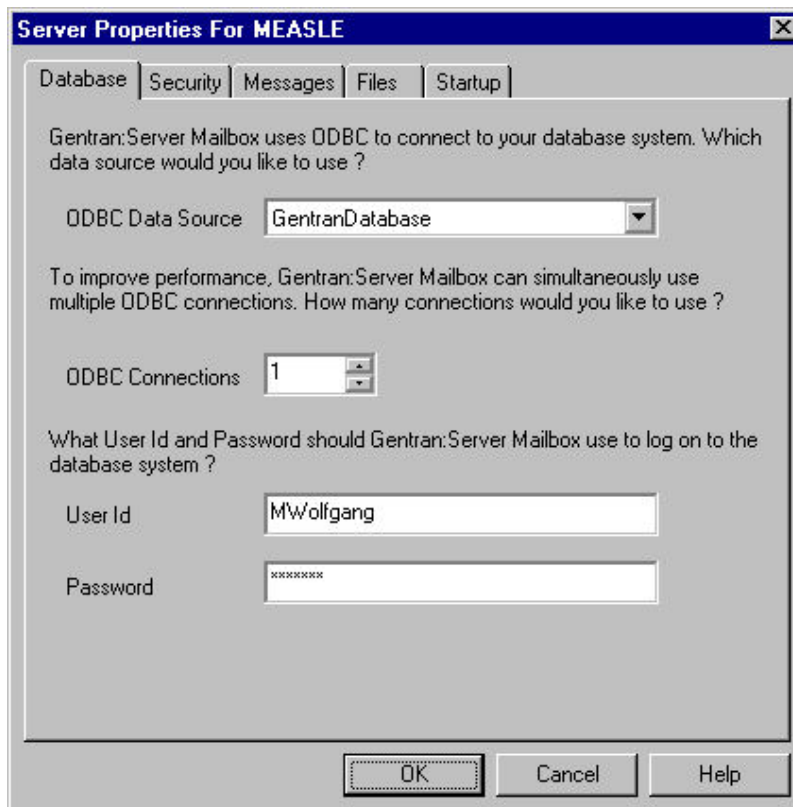
The Server Properties dialog box enables you to define the properties of the mailbox server.

To access the Server Properties dialog box, right-click the server name (first node under Sterling Gentrans:Server Mailbox root in the tree list in Mailbox Server) and select **Properties**. The system displays the Server Properties dialog box.

**Note:** If you are not connected to the mailbox server, the Security tab will not display. To connect to the server, expand the tree list under the server name.

### Server Properties Dialog Box - Database Tab

The following shows an example of the Database tab of the Server Properties dialog box.



The following table describes the parts of the Database tab.

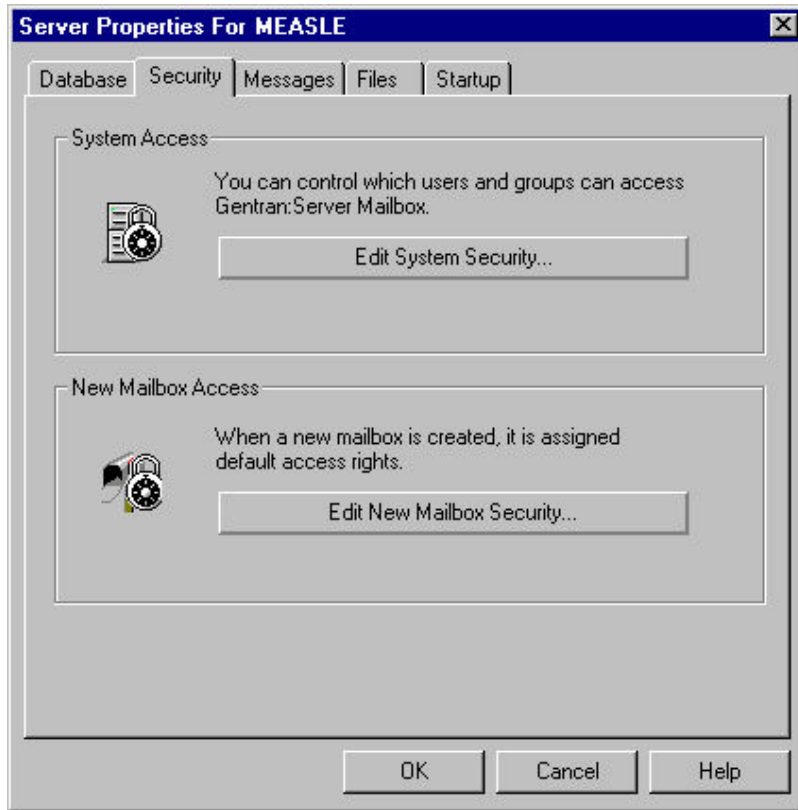
Table 7. Database tab parts and functions

Part	Function
ODBC data source	Lists the available ODBC data sources.
ODBC Connections	<p>Specifies the number of ODBC connections.</p> <p><b>Notes:</b></p> <p>The message thread count and ODBC connection counts should be set to the same number. Both the ODBC and thread connections depend on the number of processors. We do not recommend that you increase these values beyond the number of processors on the machine, because doing so can cause resource contention issues.</p> <p>For example, on a dual processor machine you would set the Mailbox ODBC connections to "2" and the Message threads to "2." Therefore, each message thread has an individual ODBC connection that can be used to connect to the database for simultaneous processing, without having to be queued.</p>
User ID	Specifies your database user ID.
Password	<p>Specifies your database password.</p> <p><b>Note:</b> Leave this box blank if there is no password for the database user ID.</p>

## Server Properties Dialog Box - Security Tab

**Note:** If you are not connected to the mailbox server, the Security tab will not display. To connect to the server, expand the tree list under the server name.

The following shows an example of the Security tab of the Server Properties dialog box.



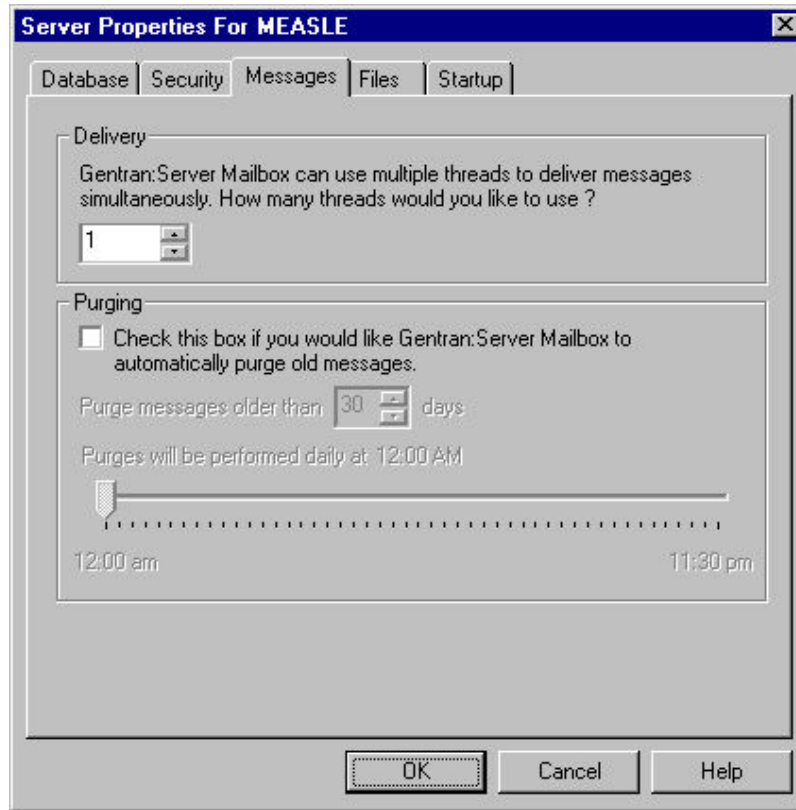
The following table describes the parts of the Security tab.

*Table 8. Security tab parts and functions*

Part	Function
Edit System Security	Displays the System Security dialog box to alter the Mailbox system security options.
Edit New Mailbox Security	Displays the New Mailbox Security dialog box, which enables you to define the security options for new mailboxes.

## Server Properties Dialog Box - Messages Tab

The following shows an example of the Messages tab of the Server Properties dialog box.



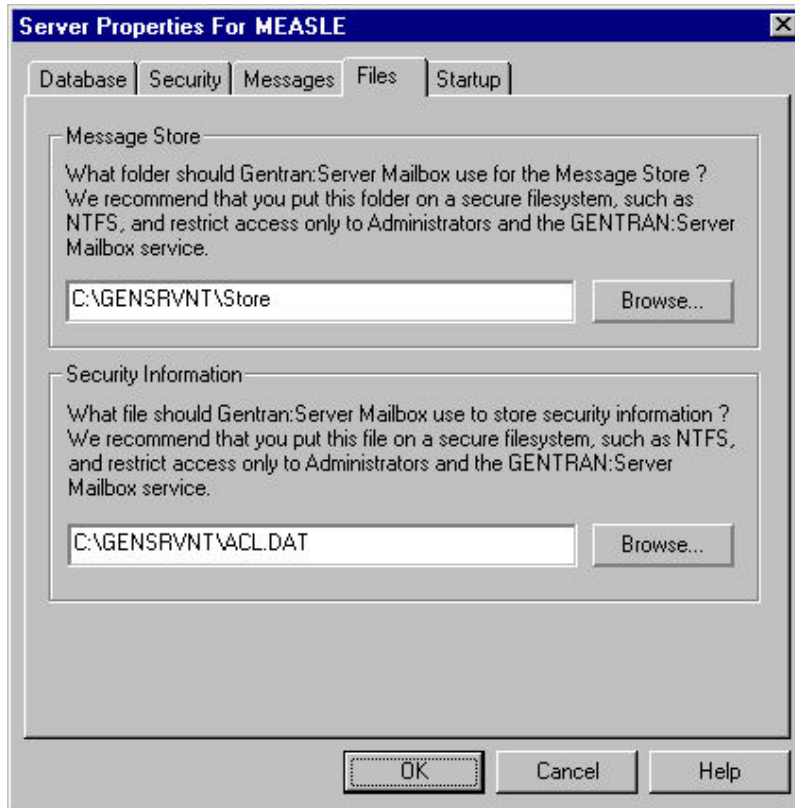
The following table describes the parts of the Messages tab.

Table 9. Messages tab parts and functions

Part	Function
How many threads would you like to use?	Specifies the number of spooler threads you want to use. <b>Note:</b> The message thread count and ODBC connection counts should be set to the same number. Both the ODBC and thread connections depend on the number of processors. We do not recommend that you increase these values beyond the number of processors on the machine, because doing so can cause resource contention issues.  For example, on a dual processor machine you would set the Mailbox ODBC connections to "2" and the Message threads to "2." Therefore, each message thread has an individual ODBC connection that can be used to connect to the database for simultaneous processing, without having to be queued.
Check this box is you would like Sterling Gentran:Server to automatically purge old messages	Indicates (if selected) that Sterling Gentran:Server should automatically purge old messages at the specified interval.
Purge messages older than	Specifies the number of days after which messages will be purged.
Purge will be performed daily at	Specifies (by dragging the slide bar) the preferred time at which the automatic message purge should be performed.

## Server Properties Dialog Box - Files Tab

The following shows an example of the Files tab of the Server Properties dialog box.



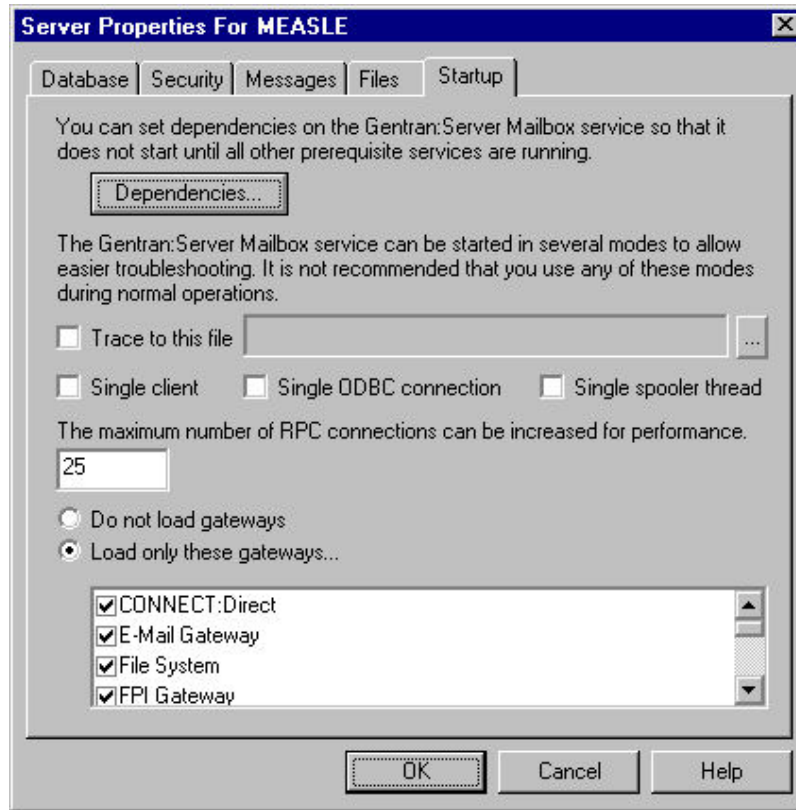
The following table describes the parts of the Files tab.

Table 10. Files tab parts and functions

Part	Function
Message Store	Specifies the folder where you want Sterling Gentran:Server Mailbox Server to use for the message store.
Security Information	Specifies the filename where you want Sterling Gentran:Server Mailbox Server to store security information.

## Server Properties Dialog Box - Startup Tab

The following shows an example of the Startup tab of the Server Properties dialog box.



The following table describes the parts of the Startup tab.

Table 11. Startup tab parts and functions

Part	Function
Dependencies	Displays the Dependencies dialog box, which enables you to configure dependencies among the Mailbox Server services.
Trace to this file	Indicates (if selected) that data will be traced to the specified file.
... (browse button)	Enables you to browse to select the specific file to which you want the system to log traced data.
Single Client	Indicates (if selected) that the system should start single client mode.
Single ODBC Connection	Indicates (if selected) that the system should use a single ODBC connection. <b>Note:</b> Select this if you want to limit your ODBC connections.
Single Spooler Thread	Indicates (if selected) that the system should use a single spooler thread. <b>Note:</b> Select this if you want to limit spooler threads.

Table 11. Startup tab parts and functions (continued)

Part	Function
<p>The maximum number of RPC connections can be increased for performance</p>	<p>Specifies the number of possible RPC (remote procedure call) connections to Mailbox Server in a user interface.</p> <p><b>Important:</b></p> <p>You should only change this value if you are certain that doing so will improve your system performance. Arbitrarily changing this value can have an adverse effect on system performance.</p> <p>You must be careful to type a reasonable values in this box, and if you are unsure what is reasonable in terms of your system, do not change the default value of 25. Large values on Server, Advanced Server, or Datacenter Server can cause a large amount of non-paged pool memory to be used. Conversely, using too small a value is also unfavorable, as it may result in TCP SYN packets being met by TCP RST from the server if the backlog queue is exhausted. You need to balance your system's memory footprint versus its scalability requirements when determining the proper value for this box.</p> <p>Before a server application can accept remote procedure calls, it must be available on the network. To do this, the server indicates to the RPC Run time that it is willing to accept calls on one or more protocol sequences. Choosing the protocol sequences a server application supports is an important decision, as different protocol sequences have very different capabilities.</p> <p>Most server programs use all protocol sequences available on the network. To receive remote procedure call requests, a server must register at least one protocol sequence with the RPC run-time library. For each protocol sequence registered by a server, the RPC run-time library creates one or more endpoints through which the server receives remote procedure call requests. The RPC run-time library creates different endpoints for each protocol sequence and the endpoint name is generated by the RPC run time or the operating system. The RPC run time or the Windows Sockets provider may override the value.</p> <p>For example, on Microsoft Windows XP Personal and Professional, or Microsoft Windows 2000 Professional, the value is limited to 5. Values greater than 5 are ignored (5 is used instead). On Microsoft Windows XP/2000 Server, Advanced Server, and Datacenter Server, the value you specify in this box is honored.</p>
<p>Do not load Gateways</p>	<p>Indicates (if selected) that no installed gateways will be loaded on this machine.</p>
<p>Load only these Gateways</p>	<p>Indicates (if selected) that only the selected gateways (in the list below) will be loaded on this machine.</p>
<p>(gateways list)</p>	<p>Displays a list of installed gateways.</p>



---

## System Security Dialog Box

The System Security dialog box defines what types of access different users and groups have.

The following table describes the parts of the System Security dialog box.

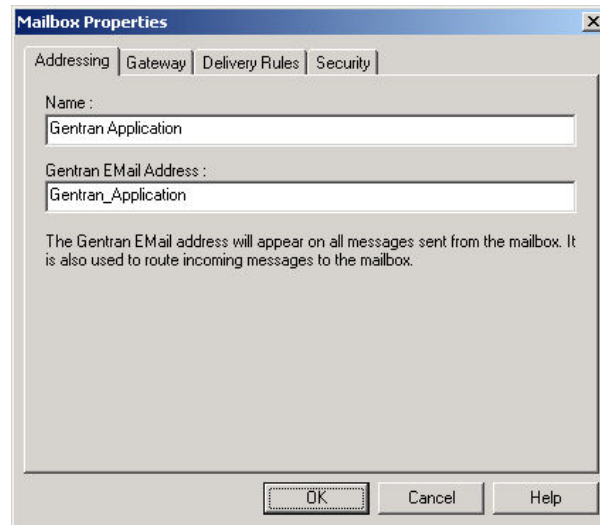
Part	Function
List of users and groups	Displays a list of users and user groups.
Type of Access	Lists the type of access rights available for a user or user group.
Add	Click to add users and groups to the list.
Remove	Click to remove users and groups from the list.

---

## Mailbox Properties

### Mailbox Properties Dialog Box - Addressing Tab

The following shows an example of the Addressing tab of the Mailbox Properties dialog box.

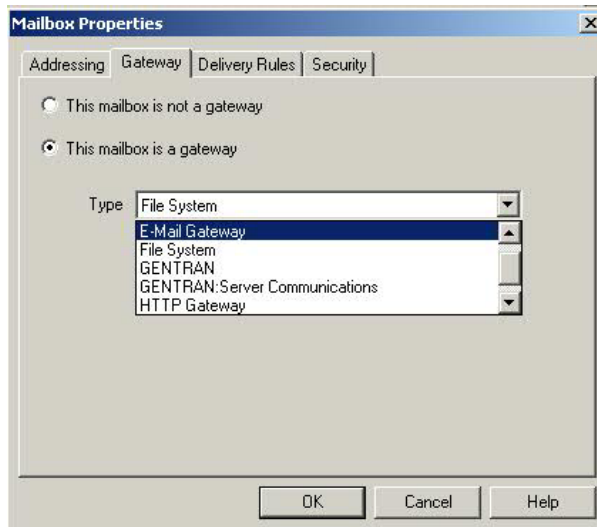


The following table describes the parts of the Addressing tab.

Part	Function
Name	Defines the name of the mailbox.
Gentran EMail Address	Defines the Sterling Gentran:Server email address for messages sent from the mailbox.

### Mailbox Properties Dialog Box - Gateway Tab

The following shows an example of the Gateway tab of the Mailbox Properties dialog box.

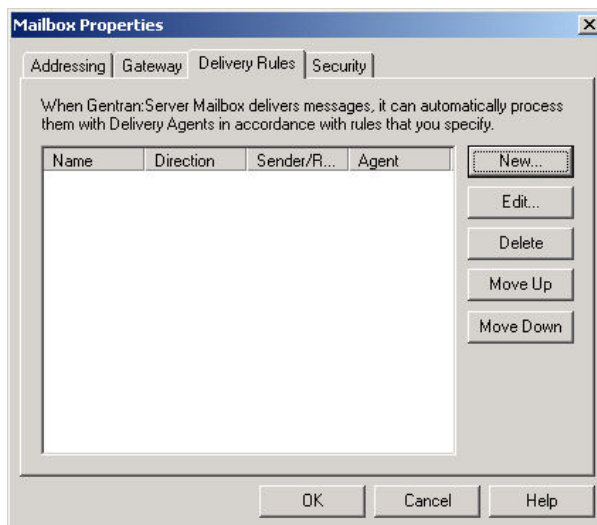


The following table describes the parts of the Gateway tab.

Part	Function
Gateway	Specifies whether the mailbox is or is not a gateway.
Type	Specifies the type of gateway. Active when "This mailbox is a gateway" is selected. Valid values are: <ul style="list-style-type: none"> <li>• Connect:Direct</li> <li>• E-Mail</li> <li>• File System</li> <li>• Gentran</li> <li>• Gentran:Server Communications</li> <li>• HTTP</li> <li>• SAP</li> </ul>
Configure	Enables you to configure properties for a selected gateway.

## Mailbox Properties Dialog Box - Delivery Rules Tab

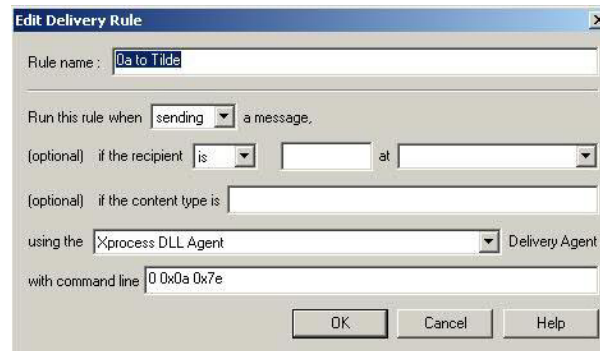
The following shows an example of the Delivery Rules tab of the Mailbox Properties dialog box.



The following table describes the parts of the Delivery Rules tab.

Part	Function
Name	Defines the name of the delivery rule.
Direction	Identifies whether the rule is run when sending or receiving a message.
Sender/Recipient	Identifies the mailbox of the sender or recipient. The mail address can be specified in addition to the mailbox name.
Agent	Identifies the name of the delivery agent to be run.
New	Creates new delivery rules.
Edit	Edits existing delivery rules.
Delete	Deletes the selected delivery rules.
Move Up	Moves the selected delivery rule up in the processing order.
Move Down	Moves the selected delivery rule down in the processing order.

The following shows an example of the New/Edit Delivery Rule dialog box.



## Mailbox Properties Dialog Box - Security Tab

The Security tab of the Mailbox Properties dialog box defines the level of access users have for the mailbox.

The following shows an example of the Security tab of the Mailbox Properties dialog box.



The following table describes the parts of the Security tab.

Part	Function
User list	Defines users and groups that have access to mailbox.
Type of Access	Designates level at which a user can interact with a mailbox. Values are: <ul style="list-style-type: none"> <li>• Full control</li> <li>• Read</li> <li>• Write</li> </ul>
Add	Enables you to grant mailbox access to users or groups.
Remove	Enables you to remove mailbox access for a user or group.

## Add Users and Groups Dialog Box

The Add Users and Groups dialog box is used to define your communications server.

The following table describes the parts of the Add Users and Groups dialog box.

Part	Function
List names from	Choose a user group name from the list.
Names	Displays a list of user group names.
Show Users	Click to show the users assigned to the selected group.
Add Names	Displays the users who have permission to access this mailbox.
Type of Access	Choose an access type for the user.

---

## Import/Export Dialog Boxes

The Import/Export dialog box enables you to export a mailbox as an XML file and then import into Mailbox Server Manager on another machine or system.

To access the export function, right-click a mailbox and select **Export**.

To access the import function, right-click the Mailboxes node and select **Import**.

The following table describes the parts of the Import/Export dialog box.

Table 12. Import/Export dialog box parts and functions

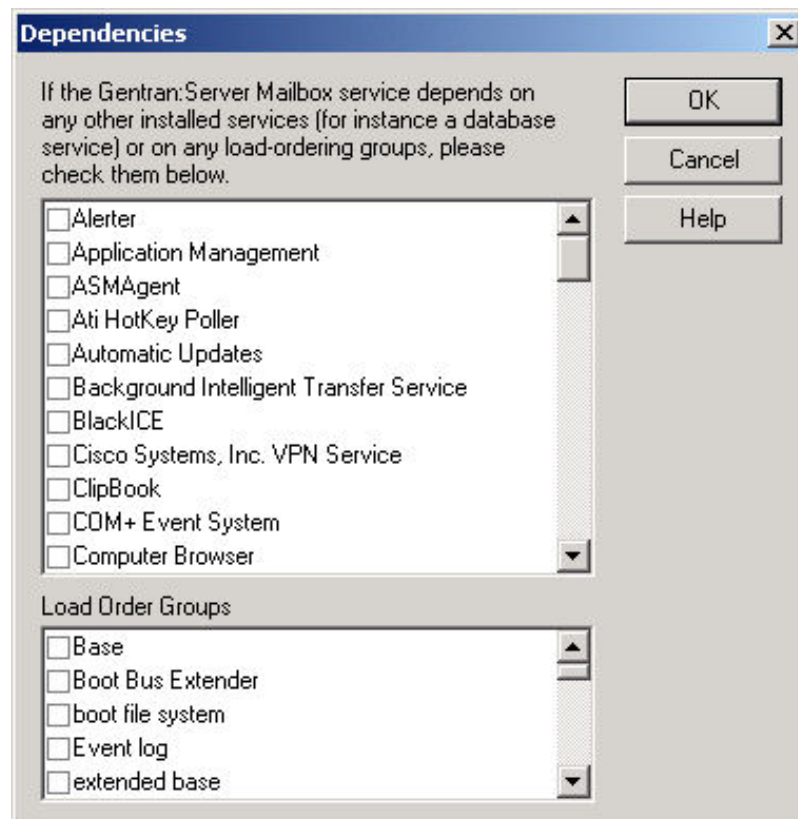
Part	Function
File name	The name of the file to which you will save the mailbox configuration or from which you will load the configuration.
Save of type	Displays the .xml extension. <b>Note:</b> The .xml extension is the only valid file type.
Files of Type	Displays the .xml extension. <b>Note:</b> The .xml extension is the only valid file type.

---

## Dependencies Dialog Box

Mailbox Server operation is based on Microsoft Windows services. These services are often dependent upon one another and must be configured to start and stop in the correct sequence.

The following shows the Mailbox Server services Dependencies dialog box.



The following table describes the parts of the Services Dependencies dialog box.

*Table 13. Dependencies tab parts and functions*

Part	Function
Services	Displays the list of Microsoft Windows services available on the Mailbox Server machine.
Load Order Groups	Displays the list of groups of Microsoft Windows services on the Mailbox Server machine.

---

## Configuring Dependencies between Services

Use this procedure to configure the dependencies among the Mailbox Server services.

### Procedure

1. Start the **Mailbox Server Manager**.
2. Select the Mailbox Server.
3. Right-click and select **Properties**.  
The system displays the Mailbox Server properties dialog box.
4. Select the **Startup** tab.
5. Click **Dependencies**.  
The system displays the Dependencies dialog box.
6. Select the check boxes upon which the Sterling Gentran:Server Mailbox service is dependent and click **OK**.  
You use the Microsoft SQL database with Sterling Gentran:Server. To ensure that the Microsoft SQL database service is running when you start the Sterling Gentran:Server Mailbox service, select the MS SQLServer service from the Services list. Microsoft Windows will start the MSSQLServer service before starting the Sterling Gentran:Server Mailbox service.

---

## Starting the Mailbox Service

Normally, the Mailbox service is started automatically when you start the Executive service. However, there may be occasions when you are required to stop and restart the Mailbox service.

### About this task

Use this procedure to start the Mailbox service.

### Procedure

1. Start the **Mailbox Server Manager**.  
The system displays the Mailbox Server Manager browser.
2. Select the **Mailbox server**.
3. Right-click and select **Start** to initiate message routing on the selected Mailbox server.

**Note:** Executive and Communications services must be restarted as well.

---

## Stopping the Mailbox Service

The Sterling Gentran:Server Mailbox service routes messages within the Mailbox system.

### Before you begin

Before you stop the Mailbox service on Sterling Gentran:Server, you must stop the Executive and Communications services.

### About this task

The Executive service is dependent upon the Mailbox service. You may use the services applet in the Microsoft Windows Control Panel to stop the Mailbox service.

You need to stop the Mailbox service before you perform routine maintenance tasks on your SQL database.

Use this procedure to stop the Mailbox service.

### Procedure

1. Start the **Mailbox Server Manager**.  
The system displays the Server Mailbox Manager browser.
2. Select the **Mailbox server**.
3. Right-click and select **Stop** to halt message routing on the selected Mailbox server.

**Note:** You will receive an error message if the Executive service or Communications service have not already been halted.

---

## Configuration Process

### Configuration stages

The following are the stages in configuring your communications for collecting and extracting messages to a folder on your file system.

1. Configure the File System Gateway. See *Configuring the File System Gateway* for more information.
2. Create the File System mailboxes you intend to use. See *Creating File System Mailboxes* for more information.

### Optional gateway process

The following are the stages in configuring your communications for use with remote messaging systems.

1. Install the optional gateway. See the *Installation Guide* for procedures.
2. Configure the optional gateway. See the appropriate configuration guide for procedures.
3. Create the mailboxes you intend to use. See the appropriate configuration guide for procedures.

---

## Configuring the File System Gateway

The first stage in setting up your communications controller to route messages to your file system is to configure your File System Gateway. This gateway is used for extracting outbound messages to a folder on your file system, or for collecting inbound messages and routing them to Sterling Gentran:Server mailboxes.

### Before you begin

Make sure that the folder you are using has been defined.

### About this task

Use this procedure to configure your File System Gateway.

### Procedure

1. Start the **Mailbox Server Manager**.  
The system displays the Server Manager browser.
2. Right-click on the Mailbox Server in the Server Manager pane and select **Register Server**.  
The system displays the Register Server dialog box.
3. Enter the name of your Mailbox server and click **OK**. If the Communications Server is running on a cluster, enter the cluster name and click **OK**.
4. In the Gateway folder, select **File System**.
5. Right-click and select **Properties** to define the properties for this gateway.  
The system displays the File System Gateway dialog box.
6. Move the slider to the appropriate interval you want to use.
7. Enter **Application/EDI** in the Default Content Type box.
8. Click **OK** to complete the configuration of this gateway.

### What to do next

You are now ready to create File System mailboxes to use with this gateway.

---

## Creating Mailboxes

### Create Mailbox Wizard Screen 1

The first screen of the Create Mailbox Wizard is used to define either your trading partner or your trading partner's VAN.

Enter the name of the VAN, or if this mailbox is using a direct connection to your trading partner, enter your trading partner's name.

### Create Mailbox Wizard Screen 2

The second screen of the Create Mailbox Wizard is used to define your trading partner's email address.

Enter your Trading Partner's e-mail address.



## Create Mailbox Wizard Screen 3

The third screen of the Create Mailbox Wizard is used to specify whether the mailbox is to be used as a gateway.

The following table describes the parts of the Register Server dialog box.

Part	Function
No, this mailbox is not a gateway	Select this option if this mailbox is not associated with a gateway.
Yes, this mailbox is a gateway	Select this option if this mailbox is associated with a gateway.
Gateway type list	Choose a gateway type from the list.

## Create Mailbox Wizard Screen 4

The fourth screen of the Create Mailbox Wizard provides summary information.

This dialog displays a summary of the entries you made while creating this mailbox.

---

## Creating File System Mailboxes

After you have configured the File System Gateway, you must create mailboxes for each Trading Partner with whom you exchange messages.

### Before you begin

Before you begin creating mailboxes for your Trading Partners you must have the following pieces of information:

- Trading Partner name
- Trading Partner EDI code or your trading partner's e-mail address
- The folder where outbound messages to this Trading Partner are to be stored
- The folder where inbound messages from this Trading Partner are to be retrieved

### About this task

Use this procedure to create File System mailboxes.

### Procedure

1. Open the **Mailbox Server Manager**.
2. Right-click on the **Mailboxes** folder icon and select **Create**.  
The system displays the Create Mailbox Wizard dialog box.
3. Enter the name of the mailbox you are creating, and click **Next** twice.
4. Select **Yes, use this mailbox as a gateway**.
5. Select **File System** as the type of gateway to use with this mailbox and click **Next**.  
The system displays the Summary dialog box.
6. Click **Finish**.

**Note:** If the information that you entered is not correct, click **Back** to correct the information and then click **Finish**.

The system displays the File System Gateway Properties dialog box.

**Note:** If you attempt to create a mailbox and the data store is missing, the system generates an error message box informing you that the mailbox cannot be created. Click **OK** to exit the message box and click **Cancel** to exit the Create Mailbox Wizard.

7. If you are sending messages to a Trading Partner, select the **Extraction** tab and do the following:
  - a. Select **Extract files from this mailbox**.
  - b. Enter a valid path name in the **When a message is sent to this mailbox, extract it to this folder** box.
  - c. Select one of the following:
    - **Append all messages to a single file** option and enter a filename in the box.
    - **Put each message in a separate file**
    - **Put each attachment in a separate file**
  - d. If you receive messages from a Trading Partner, click the **Collection** tab and continue with the next step.

Otherwise, click **OK**; you have completed this procedure.

8. If you are receiving messages from a Trading Partner, select the **Collection** tab and do the following:
  - a. Select **Collect files into this mailbox**.
  - b. Enter a path name in the **Collect files from this folder** box.

**Note:** We recommend that you create a new folder for collecting files. *Do not* use a folder that contains files with the following extensions: .exe, .dll, .hlp, .bat, .cmd, .sys, .cpl, .ocx, .map, .stp, .tpl, .ses, .ard, .arv.

Be aware that all items in the new folder will be collected and deleted.

- c. Select one of the following:
  - **Create a single message with all files in one attachment**
  - **Create a single message with an attachment for each file**
  - **Create a message for each file**
- d. Enter **Application/EDI** in the Use this Content Type for all attachments box.

**Note:** You may also enter Application/Import to have the system import the message and automatically import the file.

- e. Click **Edit Recipients**.

The system displays the Edit Recipients dialog box.
  - f. Select **Gentran Application** and click **To** to forward message that you receive to Sterling Gentran:Server.

The system displays the Email Addresses dialog box.
  - g. If needed, enter the e-mail address in the box and click **Add**. Repeat this step for each e-mail address that you want to specify. Then click **OK** to return to the Edit Recipients dialog box and proceed to the next step.

Otherwise, click **Cancel** and proceed to the next step.
9. Click **OK** to return to the Collection tab.

10. Click **OK** to save your changes.

---

## Modifying Mailbox Properties

This topic describes how to modify mailbox properties that were created using the Create Mailbox Wizard.

### About this task

Use this procedure to modify mailbox properties.

### Procedure

1. Start the **Mailbox Server Manager**.
2. From the Mailboxes folder, select the mailbox for which you want to add or modify properties.
3. Right-click and select **Properties**.
4. Do one of the following:
  - If you want to change the mailbox name or Sterling Gentran:Server e-mail address, click the **Addressing** tab.
  - If you want to change the mailbox gateway properties or configuration properties, click the **Gateway** tab.
  - If you want to change the mailbox delivery rules, click the **Delivery Rules** tab.
  - If you want to change the mailbox user security permissions, click the **Security** tab.
5. Make the appropriate modifications and click **OK** to save changes and exit the dialog box.

---

## Exporting a Mailbox

The Export function enables you to export a mailbox as an XML file so it can then be imported into Mailbox Server Manager on another machine or Sterling Gentran:Server system.

### About this task

Use this procedure to export a mailbox.

### Procedure

1. Right-click the mailbox that you want to export and select **Export**.
2. Type the name of the XML file to which the mailbox will be exported or click **Browse** to navigate to the file.
3. Click **OK**.

The system exports the mailbox to the XML file.

### What to do next

You can now import the file into Mailbox Server Manager on another machine or Sterling Gentran:Server system.

---

## Importing a Mailbox

The Import function enables you to import a mailbox that was previously exported to an XML file into Mailbox Server Manager on another machine or Sterling Gentran:Server system.

### About this task

Use this procedure to Import a mailbox.

### Procedure

1. Right-click the Mailboxes node on the machine/system into which you want to import the previously exported mailbox and select **Import**.
2. Click **Browse** to navigate to the file.
3. Click **OK**.

The system imports the mailbox.

**Note:** If you are importing a file copy mailbox, you need to manually create the collection and extraction directories after the import.

---

## Chapter 3. Lists

---

### Distribution List Wizard Screen 1

The first screen of the Distribution List Wizard allows you to name your distribution list.

This dialog allows you to enter a unique, descriptive name for this distribution list.

---

### Distribution List Wizard Screen 2

The second screen of the Distribution List Wizard allows you to populate the distribution list.

This dialog allows you to choose the mail addresses you want to associate with this distribution list.

---

### Add Recipients Dialog Box

The following table describes the parts of the Add Recipients dialog box.

Part	Function
List of recipients	Choose a recipient from the list.

---

### Edit Recipients Dialog Box (for HTTP and SMTP gateways)

The following table describes the parts of the Edit Recipients (for HTTP and SMTP gateways) dialog box.

*Table 14. Edit Recipients dialog box parts and functions*

Part	Function
Available recipients	Displays a list of mailboxes.
Selected recipients	Displays the list of selected mailboxes (recipients).
Add	Select a mailbox in the Available Recipients list and click Add to access the EMail Addresses dialog box to type the E-mail address. Then, click OK to select the mailbox as a recipient.
Remove	Select a mailbox in the Selected Recipients list and click Remove to remove the mailbox as a recipient.

---

### Edit MIME Headers Dialog Box

The following table describes the parts of the Edit MIME Headers dialog box.

*Table 15. Edit MIME Headers dialog box parts and functions*

Part	Function
(list)	Type the MIME headers that will be prepended to all outgoing messages.

---

## Creating a Distribution List

Use distribution lists when you want Mailbox Server to send messages to multiple mailboxes.

### About this task

One of the features of Mailbox Server is the ability to create lists of mail recipients. These distribution lists allow you broadcast a message to a large number of mail users.

A distribution list is a list of Mailbox Server mailboxes. This list is used when you want to send a message to a group of addresses, rather than to a single individual.

The following is an example of a distribution list of EDI Administrators:

- Mike Xavier
- Jane Kennedy
- Emily Bennett

In this example, the distribution list name is EDI Administrators. When a message is sent to this list, the message is relayed to three mailboxes that you have created in Mailbox Server.

Use this procedure to create a distribution list.

### Procedure

1. Start the **Mailbox Server Manager**.
2. Right-click the **Distribution Lists** folder icon and select **Create**. The system displays the Create Distribution List Wizard.
3. Enter a descriptive name and click **Next**. The system displays a dialog box asking you to choose distribution list recipients.
4. Select each mailbox that you want to add to your distribution list and click **Finish**.

**Note:** You may select more than one check box.

5. If any mailbox in the previous step is a gateway, the system displays the EMail Addresses dialog box for that gateway mailbox. Enter a recipient e-mail address in the text box and click **Add**. Repeat this process for each e-mail address that you want to specify.
6. Click **OK** to finish adding distribution list recipients.

---

## Deleting Distribution Lists

Delete distribution lists when you no longer exchange messages with the recipients in the distribution list.

### About this task

Use this procedure to delete distribution lists.

### Procedure

1. Start the **Mailbox Server Manager**.
2. Double-click the **Distribution Lists** folder icon to expand the list.

3. Select the Distribution list you want to delete and press **Delete**. You receive a confirmation box asking you to verify that you want to delete the distribution list.
4. Click **Yes** to delete the distribution list.

---

## Creating Recipient Lists

Use this procedure when you want to create a list of message recipients for a File System Gateway mailbox.

### Before you begin

Before you create recipient lists, make sure that the following have been created:

- all of the mailboxes that you want to include in the recipient list
- all of the distribution lists that you want to include in the recipient list

### About this task

Recipient lists are used to tell the Mailbox Server where to deliver messages. Normally, you create a File System Gateway recipient list when you configure File System Gateway collection properties. However, you can add recipient lists to a File System Gateway at a later time.

Use this procedure to create a recipient list.

### Procedure

1. Start the **Mailbox Server Manager**.
2. Double-click the **Mailboxes** folder icon to open the folder. The system displays a list of mailboxes.
3. Right-click a file system mailbox and select **Properties**. The system displays the mailbox properties dialog box.
4. Select the **Gateway** tab. The system displays the mailbox properties dialog box.
5. Click **Configure**. The system displays the Collection tab of File System Gateway Properties dialog box.
6. Verify that the **Collect Files into this folder** check box is selected.

**Note:** See Step 12 of Creating File System Mailboxes for instructions for configuring File System Gateway Collection properties.

7. Click **Edit Recipients**. The system displays the Edit Recipients dialog box.
8. Select the mailbox addresses or distribution lists that you wish to include, and click **To**, **CC**, or **BCC** to move the names into the appropriate lists.

**Note:** If you make a mistake, select the address or distribution list that is incorrect and press **Delete**.

9. Click **OK** when you have added all the addresses and distribution lists to the appropriate recipient list. You return to the properties dialog box.
10. Click **OK**.





---

## Chapter 4. Delivery Rules

---

### About Delivery Rules

A Delivery Rule is a set of conditions run on the messages in a mailbox.

When a message meets all conditions in a Delivery Rule, the system runs the command specified in the Delivery Rule. This command performs an action on the items attached to the message.

You can link a Delivery Rule to a sending mailbox or to a receiving mailbox. The system applies the Delivery Rule only to the messages of the mailbox to which the Delivery Rule is linked.

For example: Items entering Mailbox XYZ need to be enveloped. Message items that Mailbox ABC sends to Mailbox XYZ are not enveloped. You need to create a Delivery Rule that runs an enveloping program on items routed from Mailbox ABC to Mailbox XYZ. You decide which Mailbox (ABC or XYZ) should own the Delivery Rule and then add the rule to that mailbox.

At the heart of a Delivery Rule is the command that you run against the messages being sent or received. The command line parameters depend on the Delivery Agent being run.

### Delivery Rule conditions

When you create a Delivery Rule, you specify the conditions for running the command in the Delivery Rule. You can set one or more of these conditions:

- whether the command is run when sending or receiving a message (required)
- name of the sending or recipient mailbox (optional)
- e-mail address of the sender or receiver (optional)
- content type (optional)
- Delivery Agent to be used (required)
- command line parameters (required)

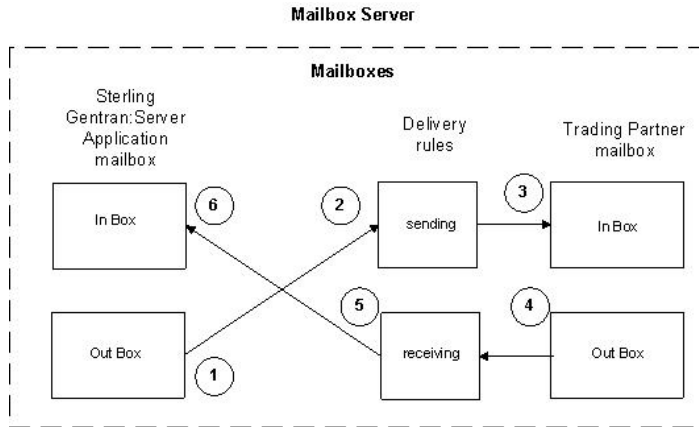
### Multiple Delivery Rules

If a mailbox has more than one associated Delivery Rule, the system evaluates and applies the Delivery Rules in the order in which they are listed on the Delivery Rules tab of the Mailbox Properties dialog box.

When a mailbox has multiple Delivery Rules, each Delivery Rule evaluates and processes the output of the previous rule. This means that the second Delivery Rule works on the output of the first Delivery Rule, the third Delivery Rule works on the output of the second Delivery Rule, and so on.

### Delivery Rule Flow

This diagram illustrates how Delivery Rules work with mailboxes. The numbers on this diagram correspond to the table below.



In the diagram, the Delivery Rule was created on the Sterling Gentran:Server Application mailbox.

Stage	Description
1	A message is created in the Sterling Gentran:Server Application mailbox. A Delivery Rule has been created and assigned to this mailbox.
2	As the message is routed from the Sterling Gentran:Server Application Out Box to the Trading Partner In Box, the message is evaluated based on the criteria established in the Delivery Rule.  If the conditions of the Delivery Rule are defined to be triggered when sending a message to this Trading Partner, the Delivery Rule is invoked and the message is processed.
3	The modified message is transferred to the Trading Partner's In Box.
4	A message is created in the Trading Partner's Out Box.
5	As the message is routed from the Trading Partner's Out Box to the Sterling Gentran:Server Application In Box, the message is evaluated based on the criteria established in the Delivery Rule. If the conditions of the Delivery Rule are defined to be triggered when receiving a message from the Trading Partner, the Delivery Rule is invoked and the message is processed.
6	The modified message is transferred to the Sterling Gentran:Server Application In Box.

## Delivery Agents

A delivery agent is a Dynamic Link Library (DLL) that performs processing on messages that are sent and received by Mailbox Server.

When you installed Sterling Gentran:Server, the following delivery agents were also installed in the Sterling Gentran:Server bin folder for use with your mailboxes.

- EXE Delivery Agent
- Xprocess DLL Agent

---

## EXE Delivery Agent

The EXE Delivery Agent that is provided with Mailbox Server controls the launch of executable programs to be run against messages that are routed by Mailbox Server. You use these executable programs to further process messages as they are being sent or received within Mailbox Server. To launch these executable programs you create a Delivery Rule for a specific mailbox.

For each message that meets the Delivery Rule criteria, the EXE Delivery Agent writes the message attachments to files, calls the executable program defined in the Delivery Rule, and then writes the output from the executable program back into the attachments.

When using the EXE Delivery Agent, the syntax of the Delivery Rule command line parameters is:

```
/i InputFileName/o OutputFileName/d WorkingDirectory EXE RealParms
```

Several substitution tokens are provided with Sterling Gentran:Server for use with the EXE delivery agent.

**Note:** Token names are case sensitive. If you write \$input instead of \$Input, the proper file will not be used.

The following table lists the substitution tokens.

Token	Description
\$Input	Stores the file name of the input.
\$Output	Stores the file name of the output.
\$Dir	Stores the working directory name.
\$Filename	Stores the original filename of the attachment.
\$SenderName	Stores the name of the sender's mailbox.
\$SenderEMail	Stores the sender's email address. The \$SenderEMail is composed of two parts: the gateway email address and the mailbox. These two parts are separated by the symbol "->".  For example: Your system is configured to use the MAPI Gateway. The MAPI Gateway mailbox is named Exchange Server (NTDC). The email address is defined as XCHG_NTDC. The MAPI recipient is joes@stercomm.com. \$SenderEMail would be replaced by:Δjoes@stercomm.com->XCHG_NTDC.

The following table describes the Delivery Rule command line parameters.

Parameter	Description
/i InputFileName	The file name used as input to the command. This parameter is optional. If you omit this parameter, the delivery agent generates a temporary file name for the attachment. You can also use a Delivery Rule token in place of the InputFileName variable.
/o OutputFileName	The file name used for output from the command. This parameter is optional. If you omit this parameter, the delivery agent generates a temporary file name for the attachment. You can also use a Delivery Rule token in place of the OutputFileName variable.
/d WorkingDirectory	The directory where the executable should be run. This parameter is optional. If you omit this parameter, the executable program is run in the Sterling Gentran:Server Bin folder. You can also use a Delivery Rule token in place of the WorkingDirectory variable.
EXE	The name of the executable command. This command can be a batch file or compiled executable program.  Examples: <ul style="list-style-type: none"> <li>• program.exe</li> <li>• batchfile.bat</li> </ul>
RealParms	The list of parameters required by the executable program.

## Example

The following example shows a Delivery Rule command line using the XPROCESS Utility.

```
/o $Input XPROCESS.EXE -0 0x00 0x7E $Input
```

In this example, the Delivery Rule takes the file identified by the \$Input token at the end of the line and converts null characters (with a hexadecimal value of 0x00) to tilde(~) characters (with a hexadecimal value of 0x7E) using the XPROCESS Utility. The result of this operation is output (using the /o parameter) to the same file name that was identified with the \$Input token.

## VATPRINT Utility

The VATPRINT utility is an external data processor used to generate Value Added Tax (VAT) Transmission Reports when sending or receiving TRADACOMS or UK EDIFACT data. This report is generated in the format defined by UK Customs and Excise and the UK Article Number Association (ANA). You invoke the VATPRINT utility in the command line of a Delivery Rule.

## About the VATPRINT Utility

The syntax of the VATPRINT utility is:

```
VATPRINT [option] [Print_filename] [Attachment_filename]
```

The VATPRINT utility records processing errors in the file Vat.err. This file is stored in the bin directory where you installed Mailbox Server. Errors are time and date stamped. The most recent error is located at the end of the file.

## VATPRINT Parameters

The VATPRINT utility has the following parameters:

Parameter	Description
Option	/p Writes the report to the printer.  /f Creates or appends the report to a file.
Print_filename	The name of the file to create or append. Used only with the /f option. If the Print_filename contains an asterisk (*), then the asterisk will be replaced with the current date and time in the format YYYYMMDDHHMMSS.
Attachment_filename	The name of the file containing the EDI messages you want the VAT Report for. When used with a Delivery Agent, use \$Input so that the currently processing file name is substituted dynamically each time the Delivery Agent runs.

**Note:** The option to send the VAT report directly to the printer can only be used in stand-alone operation. It cannot be used within a Delivery Rule.

## Example

In this example, you want to generate a VAT report from Interoffice Ltd., a Trading Partner in the UK who uses the UK EDIFACT standards. You create a Delivery Rule on the mailbox assigned to Interoffice so that when messages are sent from Interoffice to the Sterling Gentran:Server Application mailbox, a VAT report is generated and appended to a file in the C:\Reports folder.

Delivery Rule command line:

```
/o $Input VATPRINT.EXE /f C:\Reports\VATreport.txt $Input
```

## XPROCESS Utility

The XPROCESS utility is an external data processor used when sending or receiving data. You typically use the XPROCESS utility to prepare data for transmission to a Trading Partner or to prepare data that you received from a Trading Partner. You invoke the XPROCESS utility in the command line of a Delivery Rule.

## About the XPROCESS Utility

The syntax of the XPROCESS utility is:

```
XPROCESS [option] [Parameter1] [Parameter2] [Parameter3]
```

As an example:

The VAN that your Trading Partner uses expects each line of data to be terminated with a Carriage Return and Line Feed. Your data is terminated by tilde (~) characters. You use the XPROCESS utility to convert the tildes into Carriage Return/Line Feed characters.

**Note:** If you are a new Sterling Gentran:Server customer, we suggest you use the Xprocess DLL Agent to perform similar functions.

## XPROCESS Parameters

**Note:** When using a <filename> parameter, you must specify a full path and filename unless this utility is being invoked by means of the EXE Delivery Agent. In that case, only the \$Filename token is necessary to represent the filename.

Table 16. Parameter options and descriptions

Option	Description
-0	Converts any specified hexadecimal character [hexValue1] to another hexadecimal character [hexValue2]. xprocess -0 <hexValue1> <hexValue2> <filename>
-1	Appends the file you specify [filename] to the beginning of the data. This option is often used as a preprocessor when sending data to the AT&T GMS network. xprocess -1 <inputfile1> <inputfile2> <outputfile>
-2	Replaces the tilde, Carriage Return, and Line Feed characters with a single Carriage Return. This option is often used as a preprocessor when sending data to the GEIS network. xprocess -2 <filename>
-3	Replaces all Carriage Returns with tildes and removes all Line Feeds. This option is often used as a preprocessor when receiving data from the GEIS network. xprocess -3 <filename>
-4	Removes all Carriage Returns and Line Feeds. xprocess -4 <filename>
-5	Removes all Carriage Returns and Line Feeds and adds one hexadecimal character (0x1A) at the end of the file. This option is often used as a preprocessor for the TDSI network. xprocess -5 <filename>
-6	Removes all hexadecimal 0x1A characters. This option is often used as a prepostprocessor for the TDSI network. xprocess -6 <filename>
-7	Adds GM header and trailer records and removes all Carriage Returns and Line Feeds. This option is often used as a preprocessor for GM. It creates a THS and THD segment for the header and a TTR for the trailer. xprocess -7 <youruserid> <theiruserid> <fileonGMsystem>
-8	Replaces all tilde, Carriage Returns, and Line Feed characters with a single Carriage Return. This option is often used as a preprocessor when sending data to the MCI network. xprocess -8 <filename>
-9	Replaces all Line Feed characters with a tilde. This option is often used as a preprocessor when receiving data from the MCI network. xprocess -9 <filename>
-10	Replaces all Carriage Returns with Carriage Return/Line Feeds. This option is often used when receiving files from Commerce:Network. xprocess -10 <filename>

Table 16. Parameter options and descriptions (continued)

Option	Description
-11	<p>Replaces a string of hexadecimal characters with a second string of hexadecimal characters.  <code>xprocess -11 &lt;hexString1&gt; &lt;hexString2&gt; &lt;filename&gt;</code></p> <p><b>Note:</b> Each hexadecimal string value contains the prefix 0x, followed by a 2-digit hexadecimal value. Together, the prefix and the 2-digit hexadecimal value are considered one hexadecimal character.</p> <p><b>Example 1</b></p> <p>The following is an example of a command line using option -11. When executed, this command converts each ~CRLF to ~ (tilde)  <code>c:\gensrvnt\bin\xprocess.exe -11 0x7e0x0d0x0a 0x7e inputfile.txt</code></p> <p>In this example, the first string contains three hexadecimal characters(0x7e,0x0d, and 0x0a) and the second string contains one hexadecimal character (0x7e). Inputfile.txt designates the file name of the input.</p> <p><b>Example 2</b></p> <p>The following is an example of a command line when executed using the EXE Delivery Agent. When executed, this command converts each ~CRLF to ~ (tilde)  <code>/o \$Input c:\gensrvnt\bin\xprocess.exe -11 0x7e0x0d0x0a 0x7e \$Input</code></p> <p>In this example, the first string contains three (3) hexadecimal characters(0x7e,0x0d, and 0x0a) and the second string contains one (1) hexadecimal character (0x7e). The \$Input token designates the file name of the input.</p>
-12	<p>Removes all occurrences of a hexadecimal string from a file.  <code>xprocess -12 &lt;hex string&gt; &lt;filename&gt;</code></p>
-13	<p>Inserts a hexadecimal string at the prescribed increment (Nbr Bytes) in the input file. This option is typically used (but not limited to) blocking streamed EDI data.  <code>xprocess -13 &lt;NbrBytes&gt; &lt;HexStringToInsert&gt; &lt;InputFile&gt;</code></p>

## Additional Parameters

The following table describes additional XPROCESS Utility parameters.

Table 17. Additional parameters and descriptions

Parameter	Description
hexValue1	<p>A hexadecimal value in the format 0x??. Used with the -0 option (described in the table above) and is the character you want to replace in the data.</p> <p>where: ?? is the hexadecimal value.</p>
hexValue2	<p>A hexadecimal value in the format 0x??. Used with the -0 option (described in the table above) and is the new character you are exchanging for hexValue1.</p> <p>where: ?? is the hexadecimal value.</p>

Table 17. Additional parameters and descriptions (continued)

Parameter	Description
hexString1	<p>A hexadecimal string in the format 0x??0x??. Used with option -11 (described in the table above).</p> <p>where: ?? is the hexadecimal value.</p> <p><b>Note:</b> Each hexadecimal value contains the prefix 0x, followed by a 2-digit hexadecimal value. Together, the prefix and the 2-digit hexadecimal value are considered 1 hexadecimal character.</p> <p><b>Example</b></p> <p>0x7e0x0d0x0a</p> <p>This example describes a hexadecimal string containing three hexadecimal characters.</p>
hexString2	<p>A hexadecimal string in the format 0x??0x??. Used with option -11 (described in the table above).</p> <p>where: ?? is the hexadecimal value.</p> <p><b>Note:</b> Each hexadecimal value contains the prefix 0x, followed by a 2-digit hexadecimal value. Together, the prefix and the 2-digit hexadecimal value are considered one hexadecimal character.</p> <p><b>Example</b></p> <p>0x7e0x0d0x0a</p> <p>This example describes a hexadecimal string containing three hexadecimal characters.</p>
filename	<p>The name of the file on which you want to run XPROCESS. Used only when you run XPROCESS from the command line. If you are using XPROCESS in a Delivery Rule, you do not need to include a filename. The filename is passed automatically by Mailbox Server.</p>
NbrBytes	<p>Specifies a predefined increment at which you want to insert a hexadecimal string value. Used with the -13 option (described in the table above).</p>
HexString ToInsert	<p>Specifies a hexadecimal string value that you want to insert at a pre-defined increment. Used with the -13 option (described in the table above).</p>

### Example 1

In this example, a Trading Partner has sent a file that uses Null characters to terminate segments. Sterling Gentran:Server expects to see a tilde (~) character as the segment terminator.

#### Original Data

```
ISA*00*          *00*          *08*9275310000      *12*5088947000334
*970812*1133*U*00304*000000132*0*P*><nu11>GS*GP*001677954*5088947000334*9
70812*1133*83*T*003040UCS<nu11>ST*880*000830001<nu11>
```

#### Delivery Rule command line

Use the following command line to replace the Null character (hexadecimal value 0x00) with a tilde character (hexadecimal value 0x7E):

```
/o $Input XPROCESS.EXE -0 0x00 0x7E $Input
```

#### Modified Data

```
ISA*00*          *00*          *08*9275310000      *12*5088947000334
*970812*1133*U*00304*000000132*0*P*>~GS*GP*001677954*5088947000334*9
70812*1133*83*T*003040UCS~ST*880*000830001~
```



## Example 2

In this example, a Trading Partner has sent a file that uses a forward slash (/) to separate elements. Sterling Gentran:Server expects to see an asterisk (\*) character as the element separator.

### Original Data

```
ISA/00/ /00/ /08/9275310000 /12/5088947000334 /970812/  
1133/U/00304/000000132/0/P/>~GS/GP/001677954/5088947000334/9  
70812/1133/83/T/003040UCS~ST/880/000830001~
```

### Delivery Rule command line

Use the following command line to replace the forward slash character (hexadecimal value 0x5C) with an asterisk character (hexadecimal value 0x2A):

```
/o $Input XPROCESS.EXE -0 0x5C 0x2A $Input
```

### Modified Data

```
ISA*00* *00* *08*9275310000 *12*5088947000334  
*970812*1133*U*00304*000000132*0*P*>~GS*GP*001677954*5088947000334*9  
70812*1133*83*T*003040UCS~ST*880*000830001~
```

---

## Xprocess DLL Agent

The Xprocess DLL Agent is provided with Sterling Gentran:Server and is used to prepare data for transmission to a Trading Partner, or to prepare data that you received from a Trading Partner. You invoke the Xprocess DLL Agent by selecting it from the Agent list on the Edit Delivery Rule dialog box, and then entering specific command line parameters.

For each message that meets the Delivery Rule criteria, the Xprocess DLL Agent opens the source message attachment, converts the data according to the option defined, and then writes the output into a new message attachment.

When using a <filename> parameter, you must specify a full path in addition to the filename.

The following table shows the valid command line options used with the Xprocess DLL Agent.

Option	Description
0	<p>Converts any specified hexadecimal character [hexValue1] to another hexadecimal character [hexValue2].</p> <p>Usage</p> <pre>0 &lt;hexValue1&gt; &lt;hexValue2&gt;</pre> <p>The following is an example of command line option 0.</p> <pre>0 0x0D 0x0A</pre> <p>In this example, hexValue 0x0D (carriage return) converts to hexValue 0x0A (line feed).</p>

Option	Description
1	<p>Appends the file you specify [inputFileToAppend] to the beginning of the data. This option is often used as a preprocessor when sending data to the AT&amp;T GMS network.</p> <p>Usage</p> <p>1 &lt;inputFileToAppend&gt;</p> <p>The following is an example of command line option 1.</p> <p>1 c:\file_directory\filename.txt</p>
2	<p>Replaces the tilde, Carriage Return, and Line Feed characters with a single Carriage Return. This option is often used as a preprocessor when sending data to the GEIS network.</p>
3	<p>Replaces all Carriage Returns with tildes and removes all Line Feeds. This option is often used as a preprocessor when receiving data from the GEIS network.</p>
4	<p>Removes all Carriage Returns and Line Feeds.</p>
5	<p>Removes all Carriage Returns and Line Feeds and adds one hexadecimal character 0x1A to the end of the file. This option is often used as a preprocessor for the TDSI network.</p>
6	<p>Removes all hexadecimal 0x1A characters. This option is often used as a preprocessor for the TDSI network.</p>
7	<p>Adds GM header and trailer records and removes all Carriage Returns and Line Feeds. This option is often used as a preprocessor for GM. It creates a THS and THD segment for the header and a TTR for the trailer.</p> <p>Usage</p> <p>7 &lt;youruserid&gt; &lt;theiruserid&gt; &lt;fileonGMsystem&gt;</p>
8	<p>Replaces all tilde, Carriage Return, and Line Feed characters with a single Line Feed. This option is often used as a preprocessor when sending data to the MCI network.</p>
9	<p>Replaces all Line Feed characters with a tilde character. This option is often used as a preprocessor when receiving data from the MCI network.</p>
10	<p>Replaces all Carriage Returns with Carriage Return/Line Feeds. This option is often used when receiving files from the network.</p>
11	<p>Replaces a string of hexadecimal characters with a second string of hexadecimal characters. <b>Note:</b> Each hexadecimal value contains the prefix 0x, followed by a 2-digit hexadecimal value. Together, the prefix and the 2-digit hexadecimal value are considered 1 hexadecimal character.</p> <p>Usage</p> <p>11 &lt;hexString1&gt; &lt;hexString2&gt;</p> <p>The following is an example of command line option 11.</p> <p>11 0x7e0x0d0x0a 0x7e</p> <p>In this example, the first string contains three (3) hexadecimal characters. (0x7e, 0x0d, and 0x0a). The second string contains one hexadecimal character (0x7e).</p>
12	<p>Removes all occurrences of a hexadecimal string from a file.</p> <p>Usage</p> <p>12 &lt;StringToDrop&gt;</p> <p>The following is an example of command line option 12.</p> <p>12 0x??0x??0x??</p>

Option	Description
13	<p>Inserts a hexadecimal string at the specified increment [Nbr Bytes] in the input file. This option is typically used (but not limited to) blocking streamed EDI data.</p> <p>Usage 13 &lt;NbrBytes&gt; &lt;HexStringToInsert&gt;</p> <p>The following is an example of command line option 13. 13 4 0x??0x??0x??...</p>
14	<p>Strips MIME headers or any non-essential data from an incoming data file. This allows you to strip the header from the data before processing the file for translation.</p> <p>Usage 14 &lt;data start tag&gt;</p> <p>where: &lt;data start tag&gt; is the point in the file where the actual data starts (such as ISA). This is not case-sensitive. <b>Note:</b> This delivery rule uses clear text, not hexadecimal.</p>
15	<p>For MIME messages, strips off MIME headers. Also decodes messages if base64 encoded. <b>Note:</b> If the message is not a MIME message, no action will be performed.</p>

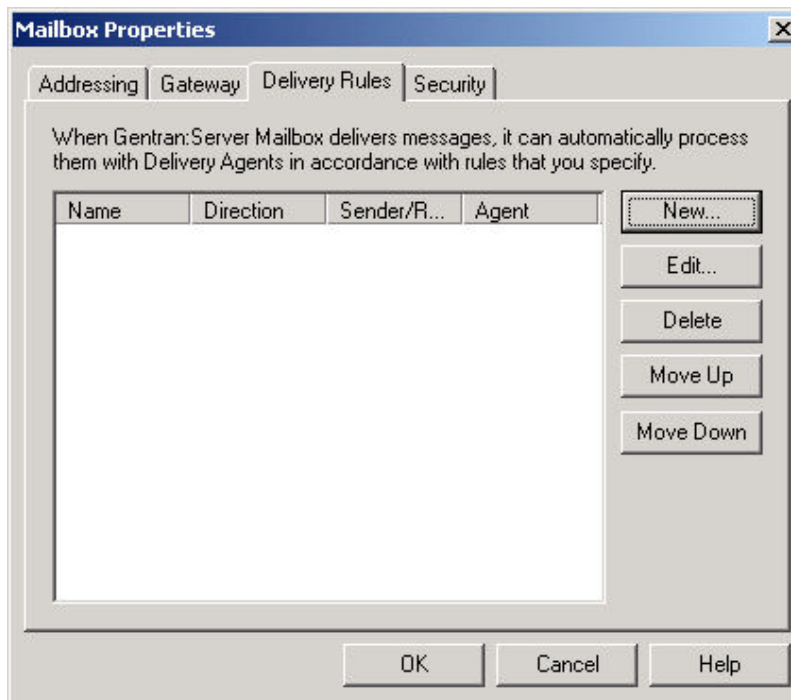
This table shows additional parameters used with the Xprocess DLL Agent.

Parameter	Description
hexValue1	<p>A hexadecimal value in the format 0x??. This parameter is used with the 0 option (described in the previous table) and is the character you want to replace in the data.</p> <p>Where: ?? is the hexadecimal value.</p>
hexValue2	<p>A hexadecimal value in the format 0x??. This parameter is used with the 0 option (described in the previous table) and is the new character you are exchanging for hexValue1.</p> <p>Where: ?? is the hexadecimal value.</p>
hexString1	<p>A hexadecimal string in the format 0x??0x??... This parameter is used with option 11 (described in the previous table).</p> <p>Where: ?? is the hexadecimal value. <b>Note:</b> Each hexadecimal value contains the prefix 0x, followed by a 2-digit hexadecimal value. Together, the prefix and the 2-digit hexadecimal value are considered 1 hexadecimal character.</p> <p>For example: 0x7e0x0d0x0a</p> <p>This example describes a hexadecimal string containing three hexadecimal characters.</p>
hexString2	<p>A hexadecimal string in the format 0x??0x??... This parameter is used with option 11 (described in the previous table).</p> <p>Where: ?? is the hexadecimal value. <b>Note:</b> Each hexadecimal value contains the prefix 0x, followed by a 2-digit hexadecimal value. Together, the prefix and the 2-digit hexadecimal value are considered 1 hexadecimal character.</p> <p>For example: 0x7e0x0d0x0a</p> <p>This example describes a hexadecimal string containing three hexadecimal characters.</p>

Parameter	Description
inputFileToAppend	Specifies a filename value. This parameter is used with the 1 option (described in the previous table) and represents the file that you want append to the beginning of the data. When using this parameter, the full path name is required.
StringToDrop	Specifies a hexadecimal string value. This parameter is used with the 12 option shown (described in the previous table) and represents the hexadecimal string value that you want to remove from a file.
NbrBytes	Specifies a predefined increment at which you want to insert a hexadecimal string value. This parameter is used with the 13 option (described in the previous table).
HexStringToInsert	Specifies a hexadecimal string value that you want to insert at a predefined increment. This parameter is used with the 13 option (described in the previous table).

## Delivery Rules Properties

The following shows the Delivery Rules tab on the Mailbox Properties dialog box.



The following table describes the parts of the Delivery Rules tab.

Table 18. Delivery Rules tab parts and functions

Part	Function
Name	Defines the name of the Delivery Rule.
Direction	Identifies if the rule is run when sending or receiving a message.
Sender/Recipient	Identifies the mailbox of the sender or recipient. The mail address can be specified in addition to the mailbox name.
Agent	Identifies the name of the delivery agent to be run.
New	Creates new Delivery Rules.
Edit	Edits existing Delivery Rules.
Delete	Deletes Delivery Rules.
Move Up	Moves the selected Delivery Rule up in the processing order.

Table 18. Delivery Rules tab parts and functions (continued)

Part	Function
Move Down	Moves the selected Delivery Rule down in the processing order.

## New/Edit Delivery Rule dialog box

The following shows the New/Edit Delivery Rule dialog box.

The following table describes the parts of the New/Edit Delivery Rule dialog box.

Table 19. New/Edit Delivery Rule parts and functions

Part	Function
Rule Name	Identifies the name of the Delivery Rule.
Run this rule when	Indicates whether the rule is run when this mailbox sends or receives a message.
If the recipient is	Selects the condition <i>is</i> or <i>is not</i> . The condition applies to the e-mail address and Mailbox Name that follow the condition.
E-mail Name (text box to right of "if the recipient" list)	Identifies the alternate or reference name, such as an email address, for the sender or receiver mailbox.
Mailbox (list to right of E-Mail name box)	Selects the name of the sender or receiver mailbox.
if the content type is	Sets the specified content type as a condition of delivery.
using the ... Delivery Agent	Selects the name of the delivery agent that interprets the Delivery Rule and starts the command.
with command line	Specifies the command that is run when the message meets the conditions of the Delivery Rule.

## Associating a Delivery Rule with a Mailbox

Delivery Rules allow you to run executable programs on the message when specific criteria for that message is met.

### Before you begin

The delivery agent must exist.

## About this task

The way in which you define a Delivery Rule depends on the way in which you want to administer the Delivery Rule. You can create all of your Delivery Rules in the Sterling Gentran:Server Application Mailbox and set the criteria so that the rule is invoked only for specific Trading Partners, or you can create Delivery Rules for each Trading Partner's mailbox.

### Example 1

You create a Delivery Rule for a Trading Partner mailbox that is invoked when sending messages to or receive messages from the Sterling Gentran:Server Application Mailbox.

### Example 2

You create Delivery Rules on the Sterling Gentran:Server Application Mailbox. When defining the criteria for the Delivery Rule you specify that the rule is invoked when sending messages to, or receiving messages from a specific Trading Partner.

Use this procedure to associate a Delivery Rule with a mailbox.

## Procedure

1. Start the **Mailbox Server Manager**.
2. Double-click the **Mailboxes** folder icon to display the mailboxes.
3. Right-click on the mailbox to which you want to add a Delivery Rule and select **Properties**.  
The system displays the Mailbox Properties dialog box.
4. Select the **Delivery Rules** tab.
5. Click **New** to create a new Delivery Rule. The system displays the Edit Delivery Rule dialog box.
6. Enter a unique name in the Rule name box.
7. Do one of the following:
  - To run this rule when sending a message from this mailbox to another mailbox, select **sending** from the "Run this rule when" list.
  - To run this rule when receiving a message from another mailbox, select **receiving** from the "Run this rule when" list.
8. Do one of the following:
  - To run this rule for a specific mailbox, continue with Step 9.
  - To run this rule for all mailboxes, proceed to Step 10.
9. Do one of the following:
  - To run this rule on a message sent or received by a specific mailbox, select **is** from the "If the sender is" list.
  - To run this rule on all messages but exclude those sent or received by a specific mailbox, select **is not** from the "If the sender is" list.
10. Do one of the following:
  - To run this rule only for a specific email address on the mailbox, enter the email address in the box to the right of the "If the sender is" list and select a mailbox from the "At" list.

- To run this rule for all email addresses, leave the box to the right of "If the sender" blank.
11. Do one of the following:
    - To run this rule on all messages in a specific mailbox, select the desired mailbox from the "At" list.
    - To run this rule on all messages, leave this field blank.
  12. Do one of the following:
    - To run this rule on a specific content type, enter a content type in the If the content type is box.
    - To run this rule on all content types, leave this field blank.
  13. Select a Delivery Agent.

**Note:** The EXE Delivery Agent and the Xprocess DLL Agent are provided with Sterling Gentran:Server.
  14. Enter the command line parameters to pass to the delivery agent when running the rule.
  15. Click **OK** to save the rule and return to the Delivery Rules tab of the Mailbox Properties dialog box.
  16. Click **OK** to save your changes and to exit the dialog box.

---

## Setting the Processing Order

When you have multiple Delivery Rules associated with a mailbox, you can set the order in which the system processes the Delivery Rules.

### About this task

Use this procedure to set the order in which a delivery agent processes Delivery Rules.

### Procedure

1. Open the **Mailbox Server Manager**.
2. Expand the **Mailboxes** folder icon to display the mailboxes.
3. Right-click on the mailbox that is associated with the Delivery Rules and select **Properties**.

The system displays the Mailbox Properties dialog box.
4. Select the **Delivery Rules** tab.
5. Select a Delivery Rule that you want to move in the list, and then click **Move up** or **Move down**. Repeat this step until the list is in the order that you require.

The system changes the Delivery Rule's position in the list.
6. Click **OK** to save your changes and to exit the dialog box.

---

## Editing a Delivery Rule

### About this task

Use this procedure to edit a Delivery Rule.

## Procedure

1. Open the **Mailbox Server Manager**.
2. Double-click the **Mailboxes** folder icon to display the mailboxes.
3. Right-click on the mailbox that is associated with the Delivery Rule and select **Properties**.  
The system displays the Mailbox Properties dialog box.
4. Select the **Delivery Rules** tab.  
The system displays the Delivery Rules for this mailbox.
5. Select the Delivery Rule you want to edit and click **Edit**.  
The system displays the Edit Delivery Rule dialog box.
6. Modify the options on the dialog box.
7. Click **OK** to save your changes and return to the Delivery Rules tab of the Mailbox Properties dialog box.
8. Click **OK** to save your changes and to exit the dialog box.

---

## Deleting a Delivery Rule

You can delete a Delivery Rule when you no longer need it.

### About this task

Use this procedure to delete a Delivery Rule.

## Procedure

1. Open the **Mailbox Server Manager**.
2. Double-click the **Mailboxes** folder icon to display the mailboxes.
3. Right-click on the mailbox that is associated with the Delivery Rule and select **Properties**.  
The system displays the Mailbox Properties dialog box.
4. Select the **Delivery Rules** tab.  
The system displays the Delivery Rules for this mailbox.
5. Select the Delivery Rule you want to delete, and click **Delete**.  
The system deletes the Delivery Rule.
6. Click **OK** to save your changes and to exit the dialog box.



---

## Chapter 5. Messages

---

### Message Filtering

Message filtering enables you select the criteria at which you want messages to display in Mailbox Server.

Message filtering limits the number of messages and attachments that the system displays. This makes it easier to locate the messages that you want to track. See the Document Tracking chapter in the *IBM Sterling Gentran:Server for Microsoft Windows User Guide* for information on Inbound and Outbound message tracking.

Mailbox Server features two type of message display filters:

- System wide - Using the System Browser Filter, you can define the criteria by which you want information from multiple mailboxes to display in one browser.
- Individual mailbox level - Using the Filter dialog box, you can define the criteria by which you want information from a single mailbox's In Box, Out Box, or Trash container to display in a browser.

Mailbox Server features two types of filter browsers. The types of filter browsers are:

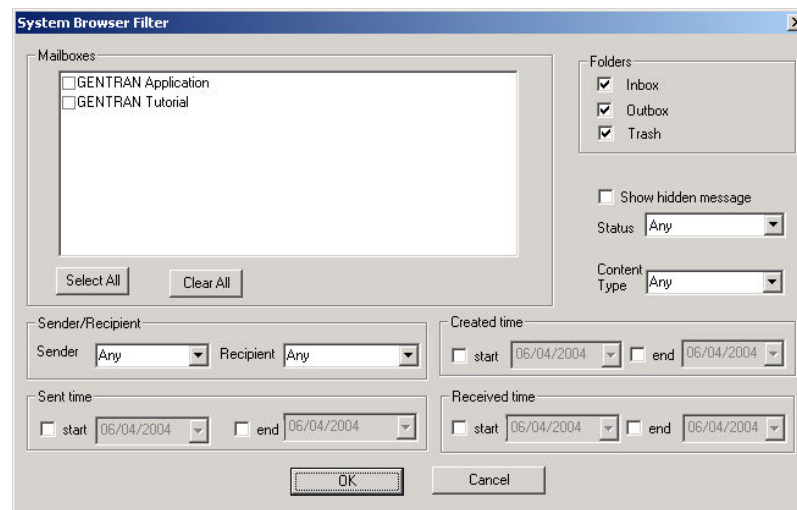
- System Browser - Enables you to display message information for multiple mailbox messages. The information that displays is based on the criteria defined in the System Browser Filter dialog box.
- Filter browser - Enables you to display message information for a single mailbox's In Box, Out Box, or Trash container. The information that displays is based on the criteria defined in the Filter dialog box.

---

### System Browser Filter Dialog Box

To access the System Browser Filter dialog box, right-click on the Mailboxes folder icon and select **Open with filter**.

The following the System Browser Filter dialog box.



The following table describes the parts of the System Browser Filter dialog box.

Table 20. System Browser Filter parts and functions

Part	Function
Mailboxes	Specifies each mailbox for which you want to display messages.
Folders	Specifies folders for which you want to display messages.
Show hidden messages	Specifies whether you want the browser to display behind-the-scenes (hidden) messages that the system uses to save gateway and mailbox properties.
Status	Specifies the status of messages that you want to display. You can select more than one status value.
Content type	Tells the filter to display messages that have the specified content type. You can type the content type in the box or select from the list.
Sender	Tells the filter to display messages for the specified message sender.
Recipient	Tells the filter to display messages for the specified message recipient.
Created time	Tells the filter to display messages created during the Start or End date specified on the calendar drop-down list.  By selecting both the Start and End date options, you can specify a date range for Created messages.
Sent time	Tells the filter to display messages sent during the Start or End date specified on the calendar drop-down list.  By selecting both the Start and End date options, you can specify a date range for Sent messages.
Received time	Tells the filter to display messages received during the Start or End date specified in the calendar drop-down list.  By selecting both the Start and End date options, you can specify a date range for Received messages.
OK	Saves changes; exits dialog box.
Cancel	Cancels unsaved changes; exits dialog box.

## System Browser Dialog Box

The System Browser displays information based on criteria specified in the System Browser Filter dialog box. This browser enables you to view messages for multiple mailboxes in one window.

The following shows the System Browser dialog box.

Mailbox	Folder	Id	Src Id	Sub...	Conten...	Conten...	Sender	Re...	Sta...	Time
GENTR...	In Box	7	6	<N...	Applic...	EDI	Mailbox1		Re...	01/10/..
GENTR...	In Box	10	9	<N...	Applic...	EDI	Mailbox1		Re...	01/10/..
GENTR...	In Box	14	13	<N...	Applic...	EDI	Mailbox1		Re...	01/10/..
GENTR...	In Box	17	16	<N...	text	plain	STEPHS		Re...	01/10/..
GENTR...	In Box	20	19	<N...	Applic...	EDI	Mailbox1		Re...	01/10/..
GENTR...	In Box	23	22	<N...	text	plain	STEPHS		Re...	01/10/..
GENTR...	In Box	25	24	<N...	text	plain	Petzon...		Re...	01/10/..
GENTR...	In Box	29	28	<N...	text	plain	STEPHS		Re...	01/10/..
GENTR...	In Box	31	30	<N...	text	plain	STEPHS		Re...	01/10/..
GENTR...	Out ...	32		<N...	text	plain		GE...	Se...	01/10/..
GENTR...	In Box	8	6	<N...	Applic...	EDI	Mailbox1		Un...	01/10/..
GENTR...	In Box	11	9	<N...	Applic...	EDI	Mailbox1		Un...	01/10/..
GENTR...	In Box	15	13	<N...	Applic...	EDI	Mailbox1		Un...	01/10/..
GENTR...	In Box	21	19	<N...	Applic...	EDI	Mailbox1		Un...	01/10/..
GENTR...	In Box	26	24	<N...	text	plain	Petzon...		Un...	01/10/..
GENTR...	In Box	33	32	<N...	text	plain	GENT...		Un...	01/10/..
Mailbox1	Out ...	6		<N...	Applic...	EDI		GE...	Sent	01/10/..
Mailbox1	Out ...	9		<N...	Applic...	EDI		GE...	Sent	01/10/..
Mailbox1	Out ...	13		<N...	Applic...	EDI		GE...	Sent	01/10/..
Mailbox1	Out ...	19		<N...	Applic...	EDI		GE...	Sent	01/10/..

The following table describes the parts of the System Browser dialog box.

Table 21. System Browser parts and functions

Part	Function
Mailbox	Displays Mailbox information based on criteria specified in the System Browser Filter.
Folder	Displays mailbox folder information based on criteria specified in the System Browser Filter.
ID	Lists the message ID assigned to the message when this mailbox received it.
Src ID	Lists the message ID assigned in the mailbox that sent the message.
Subject	Displays the Subject of the specified message.
Content type	Displays content type information based on criteria specified in the System Browser Filter.
Content Sub type	Displays content subtype information based on criteria specified in the System Browser Filter.
Sender	Displays Sender information based on criteria specified in the System Browser Filter.
Recipient	Displays Recipient information based on criteria specified in the System Browser Filter.
Status	Displays message status based on criteria specified in the System Browser Filter.
Time	Displays the time at which a message was created, sent or received based on criteria specified in the System Browser folder.

## Filter Dialog Box

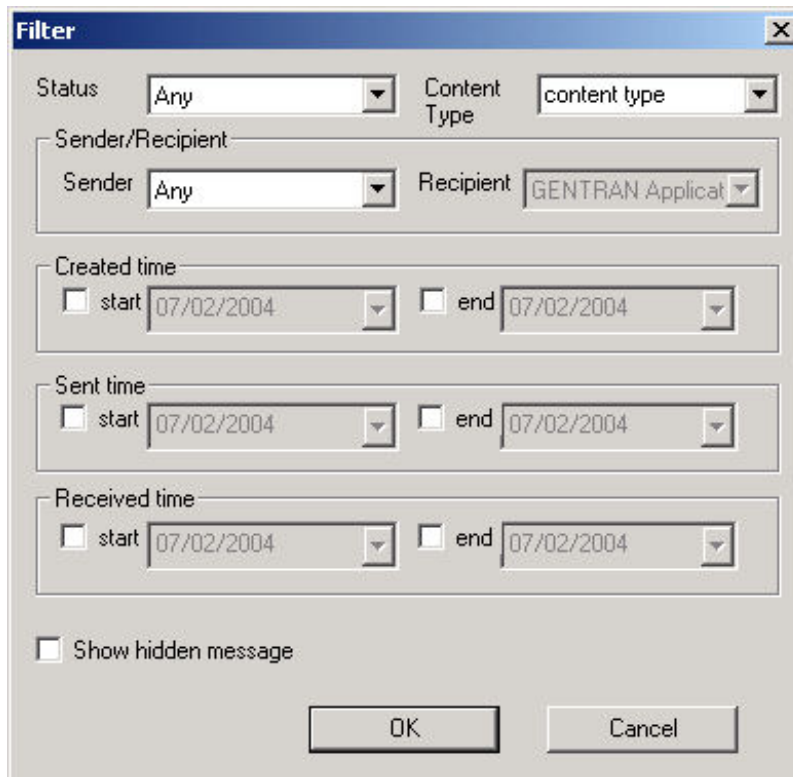
The Mailbox Server Filter dialog box is used to specify how you want the In Box, Out Box, and Trash container of a mailbox contents to display in Mailbox Server.

To access the Filter dialog box, do one of the following:

- Select the **Message Filter** icon from the Mailbox Server Main Toolbar.

- Right-click the In Box , Out Box or Trash container of a mailbox and select **Open with filter**.

The following shows the Filter dialog box.



The following table describes the parts of the Filter dialog box.

*Table 22. Filter parts and functions*

Part	Function
Status	Specifies the status of messages that you want to display. You can select more than one status value.
Content type	Tells the filter to display messages that have the specified content type. You can type the content type in the box or select from the list.
Sender	Tells the filter to display messages for the specified message sender.
Recipient	Tells the filter to display messages for the specified message recipient.
Created time	Tells the filter to display messages created during the Start or End date specified on the calendar drop-down list.  By selecting both the Start and End date options, you can specify a date range for Created messages.
Sent time	Tells the filter to display messages sent during the Start or End date specified on the calendar drop-down list.  By selecting both the Start and End date options, you can specify a date range for Sent messages.

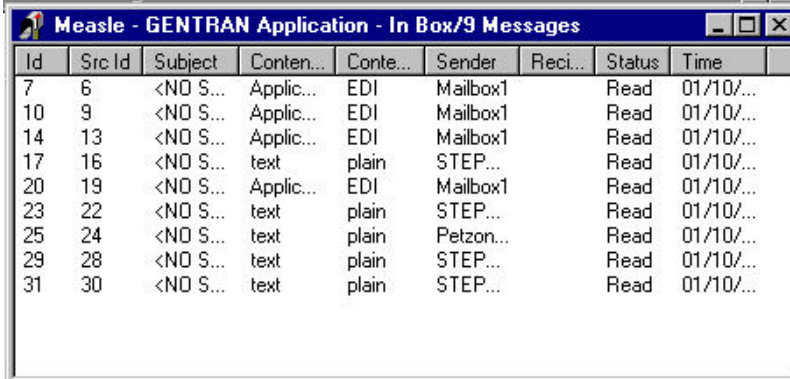
Table 22. Filter parts and functions (continued)

Part	Function
Received time	Tells the filter to display messages received during the Start or End date specified on the calendar drop-down list.  By selecting both the Start and End date options, you can specify a date range for Received messages.
Show hidden messages	Specifies whether you want the browser to display behind-the-scenes (hidden) messages that the system uses to save gateway and mailbox properties.

## Filter Browser

The Filter Browser displays messages based on criteria specified in the Filter dialog box. This browser enables you to view messages for a specific mailbox's In Box, Out Box, or Trash container.

The following shows the Filter Browser dialog box.



Id	Src Id	Subject	Conten...	Conte...	Sender	Reci...	Status	Time
7	6	<NO S...	Applic...	EDI	Mailbox1		Read	01/10/...
10	9	<NO S...	Applic...	EDI	Mailbox1		Read	01/10/...
14	13	<NO S...	Applic...	EDI	Mailbox1		Read	01/10/...
17	16	<NO S...	text	plain	STEP...		Read	01/10/...
20	19	<NO S...	Applic...	EDI	Mailbox1		Read	01/10/...
23	22	<NO S...	text	plain	STEP...		Read	01/10/...
25	24	<NO S...	text	plain	Petzon...		Read	01/10/...
29	28	<NO S...	text	plain	STEP...		Read	01/10/...
31	30	<NO S...	text	plain	STEP...		Read	01/10/...

The following table describes the parts of the Filter dialog box .

Table 23. Filter Browser parts and functions

Part	Function
ID	Lists the message ID assigned to the message when this mailbox received it.
Src ID	Lists the message ID assigned in the mailbox that sent the message.
Subject	Displays the Subject of the specified message.
Content type	Displays content type information based on criteria specified in the Filter dialog box.
Content Subtype	Displays content subtype information based on criteria specified in the Filter dialog box.
Sender	Displays Sender information based on criteria specified in the Filter dialog box.
Recipient	Displays Recipient information based on criteria specified in the Filter dialog box.
Status	Displays message status based on criteria specified in the Filter dialog box.
Time	Displays the time at which a message was created, sent or received based on criteria specified in the Filter dialog box.

---

## Mailbox Properties Dialog Box

The Mailbox Properties dialog box displays the name and location of a mailbox, as well as the number of messages in the mailbox.

The following table describes the parts of the View Attachment dialog box.

Part	Function
Mailbox Name	Displays the name of the mailbox.
Mailbox Folder	Displays the folder where the mailbox resides.
Total Number of Messages	Displays the number of messages in the mailbox.

---

## Viewing Messages

### About this task

Use this procedure to view the contents of the In Box, Out Box, or Trash container for a mailbox.

### Procedure

1. Open the **Mailbox Server Manager**.
2. In the **Mailboxes** folder, navigate to the mailbox that you want to view.

**Note:** If you have more than 500 mailboxes on your server, the system displays a message stating that the mailbox-loading process may be lengthy and inquires if you want to open only a single mailbox. If you want to enter single mailbox mode, click **OK** and select the mailbox you want to open. If you want to view all mailboxes, click **Cancel** and the mailboxes will load (this may take a few minutes).

3. To filter the display, right-click on the In Box, Out Box, or Trash container and select **Open with Filter**. Set the appropriate filter values and click **OK**.

Otherwise, select **Open** from the menu.

The system lists the messages.

4. Do one of the following:
  - To display recipient and attachment information for a message, double-click the message from the message pane. The system displays the recipient information in the recipient (middle) pane and the attachment information in the attachment (bottom) pane.
  - To filter the display to limit the types of messages that appear, see Setting Filter Properties for All Mailboxes for more information.
  - To update the information displayed in the queue panes, select **View > Refresh**.
  - To delete a message, see Deleting a Mailbox Message for more information.

---

## View Attachment Dialog Box

The View Attachment dialog box allows you to define what application opens different types of attachments.

The following table describes the parts of the View Attachment dialog box.

Part	Function
The viewer registered with Windows for this file type (default)	Starts the application associated with the file's MIME type. This is the default selection. You receive an error message if no program is associated with the MIME type.
This viewer	Defines a specific viewer to use with the attachment. The default viewer for this option is the Windows Notepad.

---

## Viewing Message Attachments

### About this task

Use this procedure to view the content of a message attachment.

### Procedure

1. Start the **Mailbox Server Manager**.
2. Open the Trading Partner's mailbox.
3. Double-click the Trading Partner's **Out Box** icon.  
The system displays the Out Box viewer.
4. Double-click the Message ID in the Out Box viewer.  
The system displays the message viewer.
5. Select the Attachment ID, and click **View**.  
The system displays the attachment viewer.
6. Do one of the following:
  - If the MIME content type of the file you are viewing is Application/EDI or a text/ content type, select this viewer and click **OK**.

**Note:** Ensure that notepad.exe is entered into the viewer box.

- If the MIME content type of the file you are viewing is not Application/EDI or text, select the viewer registered with Microsoft Windows for this file type and click **OK**.

**Note:** If the file type is not a registered MIME type, you will not be able to view the attachment.

---

## Setting Filter Properties for All Mailboxes

### About this task

Use this procedure to set filter values for all mailboxes.

### Procedure

1. Right-click on the **Mailboxes** folder and select **Open with filter**.  
The system displays the System Browser Filter dialog box.

2. Select the values you want to use for the message filter.
3. Click **OK** to save the filter values and to exit the dialog box.

**Note:** The title bar of each mailbox that has a filter applied will specify "Filter Applied."

---

## Setting Filter Properties for a Specific Mailbox

### About this task

Use this procedure to set the values you want the filter to use.

### Procedure

1. Expand the **Mailboxes** folder.
2. Expand the mailbox for which you want to set filter values.
3. Right-click on the In Box, Out Box, or Trash container and select **Open with filter** from the menu.

The system displays the Filter dialog box.

4. Select the values you want to use for the message filter.
5. Click **OK**.

**Note:** The title bar of each mailbox that has a filter applied will specify "Filter Applied."

---

## Deleting a Mailbox Message

You can delete messages from the In Box, Out Box, or Trash container of a mailbox.

### About this task

When you delete messages from the In Box or the Out Box, the system puts the deleted messages into the mailbox's Trash container.

When you delete a message from the Trash container, the system removes the message permanently. You cannot recover it.

Use this procedure to delete a message from a mailbox's In Box, Out Box, or Trash container.

### Procedure

1. Open the In Box, Out Box or Trash container that contains the message that you want to delete.
2. Right-click on the message and select **Delete**.

The system displays a dialog asking whether you want to delete the selected item.

3. Click **Yes**.
4. Select **View > Refresh** to update the information that the system displays in the title bar.

---

## Restoring Deleted Messages

The Restore function enables you to move a deleted message from Trash container back to the In Box or Out Box.



## About this task

**Note:** You cannot restore a message that has been deleted from the Trash container.

Use this procedure to restore a deleted message.

### Procedure

1. Open the **Trash** container that contains the message you want to restore.
2. Right-click on the message and select **Restore**.  
The system displays a dialog asking whether you want to restore the selected item.
3. Click **Yes**.  
The system restores the message to the appropriate In Box or Out Box.
4. Select **View > Refresh** to update the information that the system displays in the Trash container title bar.
5. Verify that the message has been restored to the In Box or Out Box.



---

## Chapter 6. Mailbox Server Error Messages

---

### About Error Messages

If you are working with the Communications subsystem through the Mailbox Server Manager, the messages you receive are displayed interactively through the user interface. If you are using Process Control to process messages through the Communications subsystem, then any messages that are generated are sent to the Sterling Gentran:Server Audit Log.

Messages that you receive while you are working in the Mailbox Server Manager are displayed interactively in a message box.

Messages you receive while working with Mailbox Server are generated by the following components:

- Sterling Gentran:Server Communications Manager (CommMgr)
- Mailbox Server Manager
- Mailbox client
- Mailbox Server gateways

**Note:** Error Messages for optional gateways are included in the optional gateway's associated configuration guide.

---

### Error Message Handling

Information and error messages that are generated by Mailbox Server are routed and stored in the audit log, the communications log (accessed through the Mailbox Server Manager) and the Microsoft Windows application event log.

#### **Sterling Gentran:Server Audit Log**

The Sterling Gentran:Server Audit Log contains application messages relating to user actions, such as opening or closing browsers, initiating or invoking a communications session, or importing data. Messages generated on behalf of the communications subsystem are prefixed with "CommMgr" to indicate that the message was associated with the Sterling Gentran:Server Communication Manager.

Using the Audit Notification System you can set up the system to alert you whenever the system generates a designated audit message.

To access the Sterling Gentran:Server Audit Log from Mailbox Server, press the Audit Log icon on the Mailbox Server main toolbar.

See Using the Audit Notification System in the *IBM Sterling Gentran:Server for Microsoft Windows Administration Guide* for information on the Sterling Gentran:Server Audit Log.

#### **Sterling Gentran:Server Communications Log**

The Sterling Gentran:Server communications log contains all messages that are generated during a communications session. This log is available from the Sessions tab of the Sterling Gentran:Server Communications Gateway properties dialog box.

## Windows Application Event Log

The Windows application event log contains system and database messages. These messages include information regarding database connections and permissions, resources, and messages relating to Sterling Gentran:Server communications sessions. You use the Windows Event Viewer from the Windows Administrative tools to view the event log.

See your Microsoft Windows documentation for information on the Windows application event log and the Event Viewer.

---

## Error Message Details

These messages may also be displayed in the audit log. Each message that is sent to the audit log is prefixed by "CommMgr."

This table describes the interactive messages generated by Mailbox Server.

Message Number	Message	Description
0	success	The function was successful.
1	partial success	The function was successful overall, however some errors were encountered. This may happen if a message is sent where some recipients are unreachable.
2	invalid session	An invalid session ID was supplied to the function. This is usually the result of not calling Logon.
3	access denied	The function could not complete because either the caller or the Mailbox Service did not have permission to access a necessary resource.
4	database error	An ODBC error occurred during processing of the function.
5	database not available	The function could not complete because no database connections were available to service it.△
6	invalid mailbox	An invalid mailbox ID, name, or email address was supplied to the function.
7	invalid list	An invalid list ID or name was supplied to the function.
8	invalid message	An invalid message ID was supplied to the function.
9	invalid recipient	The recipient ID supplied to the function was invalid (it was neither a mailbox id or a list ID).
10	invalid recipient type	An invalid recipient type was supplied to the function.
11	invalid attachment	An invalid attachment ID was supplied to the function.
12	error copying attachment	The function encountered an error while making a copy of an attachment.
13	invalid folder	An invalid folder ID was supplied to the function.
14	invalid sender	An invalid sender ID was supplied to the function.
15	invalid content type	An invalid content-type or sub-type was supplied to the function.

Message Number	Message	Description
16	spooler delivering	A request was made for the spooler to start delivering, when in fact it was already delivering.
17	spooler not delivering	A request was made for the spooler to stop delivering, when in fact it was not delivering anyway.
18	spooler cannot deliver	The spooler was unable to start delivering messages.
19	message not ready	A request was made to send a message which is not ready to be sent (it may be missing recipients or have no sender ID).
20	no message recipients	A message could not be delivered because there were no recipients.
21	insufficient buffer	The function requires a larger buffer.
22	invalid acl	An invalid Access Control List was supplied to the function.
23	security descriptor error	Mailbox Server was unable to create or access a security descriptor.
24	no acl	No Access Control List is available.
25	impersonation error	Mailbox Server was unable to assume the identity of the calling application and consequently was unable to verify the caller's access rights.
26	access check error	Mailbox Server encountered an error validating access rights.
27	network error	A network error was encountered while executing the function. This is usually the result of the Mailbox Server shutting down while a client which was connected is still running.
28	no connection	An attempt was made to call a function before a connection was successfully established to the Mailbox Server.
29	user cancel	The user cancelled the dialog.
30	connect failed	An error was encountered connecting to the Mailbox Server. This is usually because the server is not running.
31	menace not connected	A request was made to disconnect or setup notifications for a session with no associated Menace.
32	menace connect failed	The Mailbox Server was unable to connect to the requested Menace.
33	menace invalid mailbox	A request was made to cancel mailbox notifications for a session which has no Menace associated with that Mailbox.
34	invalid stream	An invalid stream ID was supplied to the function.
35	stream open failed	An error occurred opening a stream onto an attachment.
36	stream error	An error occurred while working with a stream.
37	attachment is shared	This error is obsolete.

Message Number	Message	Description
38	gateway not loaded	The function attempted to invoke a gateway function on a gateway which failed to load when the Mailbox Server was started.
39	gateway not found	The function attempted to invoke a gateway function on a gateway mailbox which uses a gateway that failed to load when the Mailbox Server was started.
41	out of memory	The Mailbox Server was unable to allocate memory from the operating system.△
42	thread token error	The Mailbox Server was unable to obtain necessary information about the thread.
43	thread model already set	An attempt was made to reinitialize the UI Library with a different threading model.
44	invalid thread model	An attempt was made to initialize the UI Library with an invalid threading model.
45	not supported	The requested function was not supported.
46	invalid clapi module	The CLAPI library was unable to connect to the CLAPI server interface using the supplied module handle.
47	invalid dynalink	An attempt was made to call a function in the CLAPI library which was not successfully connected to the CLAPI server interface.
48	invalid callback	A NULL callback function pointer was supplied.
49	use default properties	No properties were available. You should use reasonable defaults.
50	gateway property error	A gateway encountered an error retrieving its properties.
51	could not create timer	A system timer could not be created. This condition occurs on versions of Microsoft Windows prior to 4.0.
52	invalid gateway	An invalid gateway name was supplied.
53	file error	The Mailbox Server encountered a file system error.
54	sid error	The Mailbox Server encountered an error in a Security ID.
55	delivery agent not loaded	An attempt was made to call a function in a Delivery Agent which was not loaded when the Mailbox Server was started.
56	invalid delivery agent	An invalid delivery agent was supplied to the function.
57	invalid delivery rule	An invalid delivery rule was supplied to the function.
58	delivery agent handled message	The delivery agent handled the message fully, no more processing is required.
59	delivery agent param error	The delivery agent encountered an error in its parameters. This is usually caused by an incorrect command line in the delivery rule.
60	delivery agent error	The delivery agent encountered an error.

<b>Message Number</b>	<b>Message</b>	<b>Description</b>
71	message store does not exist	The store directory containing mailbox configurations is missing.
1000	gateway error	The gateway encountered an error.
1001	mailbox not supported by gateway	The gateway was requested to perform a function using a mailbox which is not configured to use that gateway.
1019	The File System Gateway failed to initialize the collection process.	Verify all collection folders are valid and review the Microsoft Windows Application Event viewer for possible causes





---

## Notices

This information was developed for products and services offered in the U.S.A.

IBM may not offer the products, services, or features discussed in this document in other countries. Consult your local IBM representative for information on the products and services currently available in your area. Any reference to an IBM product, program, or service is not intended to state or imply that only that IBM product, program, or service may be used. Any functionally equivalent product, program, or service that does not infringe any IBM intellectual property right may be used instead. However, it is the user's responsibility to evaluate and verify the operation of any non-IBM product, program, or service.

IBM may have patents or pending patent applications covering subject matter described in this document. The furnishing of this document does not grant you any license to these patents. You can send license inquiries, in writing, to:

*IBM Director of Licensing*

*IBM Corporation*

*North Castle Drive*

*Armonk, NY 10504-1785*

*U.S.A.*

For license inquiries regarding double-byte character set (DBCS) information, contact the IBM Intellectual Property Department in your country or send inquiries, in writing, to:

*Intellectual Property Licensing*

*Legal and Intellectual Property Law*

*IBM Japan Ltd.*

*19-21, Nihonbashi-Hakozakicho, Chuo-ku*

*Tokyo 103-8510, Japan*

**The following paragraph does not apply to the United Kingdom or any other country where such provisions are inconsistent with local law:**

INTERNATIONAL BUSINESS MACHINES CORPORATION PROVIDES THIS PUBLICATION "AS IS" WITHOUT WARRANTY OF ANY KIND, EITHER EXPRESS OR IMPLIED, INCLUDING, BUT NOT LIMITED TO, THE IMPLIED WARRANTIES OF NON-INFRINGEMENT, MERCHANTABILITY OR FITNESS FOR A PARTICULAR PURPOSE. Some states do not allow disclaimer of express or implied warranties in certain transactions, therefore, this statement may not apply to you.

This information could include technical inaccuracies or typographical errors. Changes are periodically made to the information herein; these changes will be

incorporated in new editions of the publication. IBM may make improvements and/or changes in the product(s) and/or the program(s) described in this publication at any time without notice.

Any references in this information to non-IBM Web sites are provided for convenience only and do not in any manner serve as an endorsement of those Web sites. The materials at those Web sites are not part of the materials for this IBM product and use of those Web sites is at your own risk.

IBM may use or distribute any of the information you supply in any way it believes appropriate without incurring any obligation to you.

Licensees of this program who wish to have information about it for the purpose of enabling: (i) the exchange of information between independently created programs and other programs (including this one) and (ii) the mutual use of the information which has been exchanged, should contact:

*IBM Corporation*

*J46A/G4*

*555 Bailey Avenue*

*San Jose, CA 95141-1003*

*U.S.A.*

Such information may be available, subject to appropriate terms and conditions, including in some cases, payment of a fee.

The licensed program described in this document and all licensed material available for it are provided by IBM under terms of the IBM Customer Agreement, IBM International Program License Agreement or any equivalent agreement between us.

Any performance data contained herein was determined in a controlled environment. Therefore, the results obtained in other operating environments may vary significantly. Some measurements may have been made on development-level systems and there is no guarantee that these measurements will be the same on generally available systems. Furthermore, some measurements may have been estimated through extrapolation. Actual results may vary. Users of this document should verify the applicable data for their specific environment.

Information concerning non-IBM products was obtained from the suppliers of those products, their published announcements or other publicly available sources. IBM has not tested those products and cannot confirm the accuracy of performance, compatibility or any other claims related to non-IBM products. Questions on the capabilities of non-IBM products should be addressed to the suppliers of those products.

All statements regarding IBM's future direction or intent are subject to change or withdrawal without notice, and represent goals and objectives only.

All IBM prices shown are IBM's suggested retail prices, are current and are subject to change without notice. Dealer prices may vary.

This information is for planning purposes only. The information herein is subject to change before the products described become available.

This information contains examples of data and reports used in daily business operations. To illustrate them as completely as possible, the examples include the names of individuals, companies, brands, and products. All of these names are fictitious and any similarity to the names and addresses used by an actual business enterprise is entirely coincidental.

#### COPYRIGHT LICENSE:

This information contains sample application programs in source language, which illustrate programming techniques on various operating platforms. You may copy, modify, and distribute these sample programs in any form without payment to IBM, for the purposes of developing, using, marketing or distributing application programs conforming to the application programming interface for the operating platform for which the sample programs are written. These examples have not been thoroughly tested under all conditions. IBM, therefore, cannot guarantee or imply reliability, serviceability, or function of these programs. The sample programs are provided "AS IS", without warranty of any kind. IBM shall not be liable for any damages arising out of your use of the sample programs.

Each copy or any portion of these sample programs or any derivative work, must include a copyright notice as follows:

© IBM 2012. Portions of this code are derived from IBM Corp. Sample Programs. © Copyright IBM Corp. 2012.

If you are viewing this information softcopy, the photographs and color illustrations may not appear.

#### **Trademarks**

IBM, the IBM logo, and [ibm.com](http://www.ibm.com)<sup>®</sup> are trademarks or registered trademarks of International Business Machines Corp., registered in many jurisdictions worldwide. Other product and service names might be trademarks of IBM or other companies. A current list of IBM trademarks is available on the Web at "Copyright and trademark information" at <http://www.ibm.com/legal/copytrade.shtml>.

Adobe, the Adobe logo, PostScript, and the PostScript logo are either registered trademarks or trademarks of Adobe Systems Incorporated in the United States, and/or other countries.

IT Infrastructure Library is a registered trademark of the Central Computer and Telecommunications Agency which is now part of the Office of Government Commerce.

Intel, Intel logo, Intel Inside, Intel Inside logo, Intel Centrino, Intel Centrino logo, Celeron, Intel Xeon, Intel SpeedStep, Itanium, and Pentium are trademarks or registered trademarks of Intel Corporation or its subsidiaries in the United States and other countries.

Linux is a registered trademark of Linus Torvalds in the United States, other countries, or both.

Microsoft, Windows, Windows NT, and the Windows logo are trademarks of Microsoft Corporation in the United States, other countries, or both.

ITIL is a registered trademark, and a registered community trademark of the Office of Government Commerce, and is registered in the U.S. Patent and Trademark Office.

UNIX is a registered trademark of The Open Group in the United States and other countries.

Java™ and all Java-based trademarks and logos are trademarks or registered trademarks of Oracle and/or its affiliates.

Cell Broadband Engine is a trademark of Sony Computer Entertainment, Inc. in the United States, other countries, or both and is used under license therefrom.

Linear Tape-Open, LTO, the LTO Logo, Ultrium and the Ultrium Logo are trademarks of HP, IBM Corp. and Quantum in the U.S. and other countries.

Connect Control Center®, Connect:Direct®, Connect:Enterprise®, Gentran®, Gentran®:Basic®, Gentran:Control®, Gentran:Director®, Gentran:Plus®, Gentran:Realtime®, Gentran:Server®, Gentran:Viewpoint®, Sterling Commerce™, Sterling Information Broker®, and Sterling Integrator® are trademarks or registered trademarks of Sterling Commerce®, Inc., an IBM Company.

Other company, product, and service names may be trademarks or service marks of others.

---

# Index

## A

- application event log 61
- attachments
  - defining applications 57
  - overview 2
  - viewing 57
- audit log 61
  - error messages 62

## C

- communications gateway 19, 20, 21
- communications log 61
- communications server 7
- configuration process
  - optional steps 25
- configuring
  - file system gateway 26
  - file system mailboxes 27
- content subtypes 1
- content types 1
  - file system mailbox 7
- Create Mailbox Wizard 5

## D

- data preparation 39
- default content type
  - File System Gateway dialog box 7
- delivery agents 20
  - creating delivery rules 47
  - EXE agent command line 37
  - EXE tokens 37
  - overview 36
  - process order 49
  - VATPRINT utility 39
  - Xprocess DLL Agent 43
  - XPROCESS utility 39
- delivery rules 39
  - agents 36
  - associating with a mailbox 47
  - conditions 35
  - create 47
  - definition 35
  - deleting 50
  - edit 47
  - editing 49
  - example 35
  - message flow 35
  - process order 49
  - processing order 35
  - properties 20, 46
- delivery threads
  - server properties 14
- dependencies
  - configuring 24
  - Mailbox service 23
- displays
  - filtering 51, 53, 55
- distribution lists 31

- distribution lists (*continued*)
  - creating 32
  - definition 32
  - deleting 32
- DLLs 36

## E

- e-mail addresses
  - Gentran mailbox 19
  - recipients 11
- error messages
  - details 62
  - logs 61
  - overview 61
- EXE delivery agent
  - example 37
  - parameters 37
  - tokens 37
  - VATPRINT utility 39
- exporting mailboxes 23, 29
- external data processor 39

## F

- file collection
  - File System Gateway dialog box 7
  - file system mailbox 7
- file extraction
  - file system mailbox 9
- file system gateway
  - properties 7, 9
- file system mailboxes
  - creating 27
  - properties 7, 9
- files
  - server properties 16
- filtering
  - all mailboxes 57
  - criteria 53
  - displays 51
  - specific mailbox 58
- filters 51

## G

- gateway types 19
- gateways
  - mailbox 27
  - optional 25
  - overview 2
  - server properties 16
- groups
  - adding 22

## I

- importing mailboxes 23, 30

- inbound
  - message flow 3

## L

- load order groups
  - Mailbox service 23

## M

- mailbox access 21
- mailbox properties 29
  - delivery rules 20, 46
- Mailbox Properties dialog box
  - Addressing tab 19
  - Delivery Rules tab 20
  - Gateway tab 19
  - Security tab 21
- mailbox security
  - server properties 13
- mailbox server components 1
- Mailbox Server Manager
  - overview 5
  - parts and functions 5
  - toolbar 5
- mailbox service
  - startup 16
- mailboxes
  - associating delivery rules 47
  - creating 26, 27
  - deleting messages 58
  - delivery rules 20, 46
  - displaying messages 52
  - exporting 23, 29
  - filtering 53, 55, 57, 58
  - gateway 27
  - importing 23, 30
  - location 56
  - modifying 29
  - name 56
  - number of messages 56
  - restoring deleted messages 59
  - security 13
  - types 1
  - viewing attachments 57
  - viewing messages 56
- manually starting Mailbox service 24
- manually stopping Mailbox service 25
- message construction
  - file system mailbox 7
- message extraction
  - file system mailbox 9
- message filters
  - setting 57, 58
- message flow
  - delivery rules 35
  - overview 3
- message store
  - server properties 16

- messages
  - deleting 58
  - displaying 52
  - filtering 51, 53, 55, 57, 58
  - MIME headers 31
  - overview 2
  - properties 2
  - purging 14
  - recipients 11, 31
  - restoring 59
  - server properties 14
  - viewing 56
  - viewing attachments 57
- MIME types
  - opening 57

## O

- ODBC data source
  - server properties 12
- opening attachments 57
- optional gateways
  - configuration overview 25
- outbound
  - message flow 3

## P

- partner
  - creating mailbox 26, 27
- periodic scan interval
  - File System Gateway dialog box 7
- purging messages
  - server properties 14

## R

- recipient lists
  - creating 33
- recipients
  - e-mail addresses 11
  - editing 11, 31
- RPC connections
  - server properties 16

## S

- security
  - mailbox access 13
  - server properties 13, 16
  - system access 13
- security access 19, 21
- security information
  - server properties 16
- server 7
- server properties
  - database 12
  - files 16
  - messages 14
  - overview 12
  - security 13
  - startup 16
- starting Mailbox service 24
- startup
  - server properties 16

- stopping Mailbox service 25
- system security 19
  - server properties 13

## T

- trading partner
  - creating mailbox 26, 27

## U

- users
  - access levels 19
  - adding 22

## V

- VATPRINT utility
  - example 39
  - parameters 39
  - syntax 39

## X

- Xprocess DLL Agent
  - options 43
  - parameters 43
- XPROCESS utility
  - examples 39
  - parameters 39
  - syntax 39





Product Number: 5725-D09

Printed in USA